

IN THE CITY... FOR THE CITY

PRESIDENT'S REPORT
2011-2012



LETTER FROM THE PRESIDENT

Dear Friends:

It may surprise you to find out that I never expected to become a college president.

My career path in higher education began when a visit to my sister's college landed me an impromptu interview for my first 'real' job as a director of financial aid. I still remember digging an old choir dress out of the back of my car, cutting it off, and then hemming it up so that I would have something to wear to the interview.

Since that day, 35 years ago, I have trusted the Lord to guide my footsteps rather than hold too tightly to my own plans, and I am continually reminded of the unexpected ways that God provides for our needs when we follow His leading. No matter what college or university I have found myself at, my career objective has always been to serve each institution faithfully, regardless of position, and to learn from the many gifted staff and administrators with whom I have had the pleasure of working. Yet, nearly four decades of experience still could not have prepared me for the adventure the Lord has called us to at Warner Pacific as we discover what it means to be, "In the City, For the City."

God is moving in extraordinary ways at Warner Pacific College.

During this season in the life of the institution, I continue to faithfully follow God's leading and trust that He will provide for our needs. Warner Pacific is a Christ-centered, urban, liberal arts college dedicated to providing students from diverse backgrounds an education that prepares them to engage actively in a constantly changing world. As we live out our mission, opportunities to grow abound!

The "Design for Urban Higher Education," articulates a seven-year strategy to double our student population, break ground on additional buildings at our Mt. Tabor campus, launch new sites for our ADP program, and invest in both our in-person and online educational delivery systems.

As a friend of the college, I want you to know that I firmly believe that serving in this role, at this moment, is my calling. I may not have planned to become a college president but as is so often the case, God's plans are so much greater than our own. I am prepared to follow Jesus more passionately, love Portland more intentionally and lead the entire Warner Pacific College community to do the same. This will require each of us—donors, alumni, administration, students, staff, and faculty—to fully trust the Lord's guidance and provision as we embrace this exciting vision for the future.

Thank you for your faithfulness to Warner Pacific College. As you read through these pages I pray that you are encouraged by our partnership and inspired to join the next chapter of our story. Your giving continues to unlock possibilities, for our students, for the College, for the city in which we live, and for the neighbors whom we love.

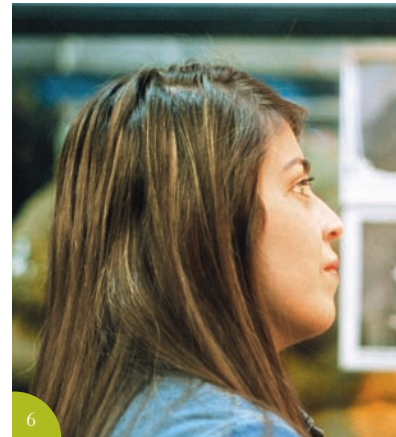
Thanks be to God!

Andrea P. Cook, Ph.D.
President

contents

President's Report 2012

- 4 **JESS BIELMAN**
Staff Reflection: Students who are making a difference in the city.
- 5 **BILL DOBRENEN**
Faculty Reflection: How we serve the city and love the people.
- 6 **YESENIA DELGADO**
How I discovered my calling at Warner Pacific College.
- 7 **SUPPORTER STORIES**
Judith McGee and Mark Fast tell us how supporting Warner Pacific College has shaped their personal growth.
- 8 **FINANCIALS**
- 10 **SUPPORTERS**



Experience

2219 SE 68th Avenue
Portland, OR 97215
503.517.1020
warnerpacific.edu

EDITOR Shirell Hennessy

CREATIVE DIRECTOR Karen Gibson

PHOTOGRAPHY Jared Birt, Cody Harrod, David Papazian, Kelly Searle

PRESIDENT Andrea P. Cook, Ph.D.

VICE PRESIDENT FOR ENROLLMENT AND MARKETING Dale Seipp, Jr.

MARKETING AND CAMPUS RELATIONS MANAGER Shirell Hennessy

DIRECTOR OF ALUMNI, CHURCH AND PARENT RELATIONS Cindy Petersen Pollard



Students shaped by service.

By Jess Bielman '00

As I sat on the stage during Dr. Cook's inauguration in September, 2009, I found myself reflecting on one particular portion of her speech; "Our urban location will be our organizing principle." Although many of our programs had begun reaching out to our urban community, the strength of her declaration went beyond the path we were already on and has truly changed the course of the entire institution.

I was new to the Christian faith when I came to Warner Pacific as a student in 1996. I felt unprepared for college but I also had a strong call to Christian ministry. Now, being an ordained Church of God minister on the campus that supported me and shaped my faith so critically is one of the great joys of my life. As the Executive Director of Contextualized Ministries at Warner Pacific College, I have the privilege of overseeing Campus Ministries, service to the

community, and the internship program with Christian Ministries majors—everything I feel most called to here at the College.

Since Dr. Cook's declaration, many of us are working hard to live into our vision. We are dedicated to our Southeast Portland location and our service commitment is embedded in many areas of the Warner Pacific community, including our coursework, partnerships with other colleges and organizations, as well as outreach to our neighborhood. Eli Ritchie, Coordinator of Service Learning and Student Programs, encourages students to incorporate service into all aspects of their lives. "We remind students that service should shape their entire spiritual walk, including prayer, worship and even their studies," says Ritchie.

Robert Lupton, the keynote speaker at Dr. Cook's inauguration, advised us to become experts in everything within a one mile radius of the College. An initiative gaining significant traction in this regard is our ministry training programs. These internships have been evolving over the past three years and students are now engaging the city in remarkable ways on a weekly basis. On Tuesday evenings, students spend time with homeless youth ages 14-24 as part of an outreach overseen by Ken Lloyd, one of our community partners. Ken describes the teens in his youth group as fun-loving, energetic, optimistic, and kind. These adjectives could describe most groups of teenagers. However, when night falls, these same youth can be found sleeping in 'puppy piles' to stay warm. According to Ken, they are "a youth group minus houses."

Another example of our involvement in the community can be seen in our partnership with Catholic Charities and two students, Tina and Shawna, who are helping a family of refugees from Iraq to transition to a new life in Portland. Help comes in practical ways such as teaching the father to drive a car and find insurance, or through tutoring the children in English. Listening to stories shared by the mother of the family as she recalls the constant threat of car bombs, while in the same breath describing how much they miss their family back in Iraq, has profoundly impacted the lives of these students.

To fully embrace being, "in the city, for the city," Warner Pacific has a responsibility to equip our students with the skills to engage their surroundings in meaningful ways. Whether in a non-profit management track, teaching music in schools where programs have been cut, working with sex trafficking prevention, providing trauma intervention services, or exchanging stories and sharing a hot dog on 82nd Avenue; Warner Pacific students are actively developing the insight and experience needed to fulfill their calling. I am grateful God has allowed me to minister in this context and take part in His plan as He prepares Warner Pacific students to passionately participate with Him in reaching those who need help in our city. ■



Becoming a community that loves. By Bill Dobrenen

I am so glad that our Lord's greatest commandment was not some legalistic list of dos and don'ts. Rather, it speaks to something we can all do; love. We are to love God. We are to love our neighbors. We are to love ourselves. "All the law and prophets" hang on these three imperatives.

With some 1,100 students and well over 100 professional (adjunct) faculty members in the Warner Pacific Adult Degree Programs, we have many opportunities to put this love into practice.

Recently, while reflecting on a rigorous five-week course, a student told me, "Before this class, I had lost my faith. But through this class, I rediscovered it." I was overcome with gratefulness for the way in which God was able to use Warner Pacific College to help guide the steps of this student's journey of faith.

But how did this happen? How can a five-week college course have such a lasting impact? It's possible because as we live into Christ's greatest commandment, others are able to more clearly recognize His deep love for them. A large part of this course involved serving in the community. This particular student spent several hours sorting clothing to be given to homeless families in Portland. It wasn't a particularly glamorous job, but it was a soul-opening time for her. As she was serving in the small things, the Lord was there – reaching out to her, loving her. This is the secret beauty found in Christ's command; as we learn to love God and others, God pours out the fullness of His love on us.

God's love and presence don't always appear as we expect, even on the campus of a Christ-centered college.

So, how do I bring Jesus into my classroom? I don't need to; He is already there. He comes in the form of thoughtful questions from curious students and debates that seek to uncover deeper

truths. He comes in the form of the learning process, in shared blessings, or confessed brokenness. He may even come in the form of an unsatisfactory grade. Christ is most certainly present as our students serve others. "He is there and He is not silent."

If Christ is in me, as the Scriptures indicate, then He is there when and where I am. He longs to love; it is His very nature to do so. There is no time or place where He is absent. So I don't always feel the need to do a daily devotion or limit reading to only scripture in class. We can learn much from secular essays and writings from other faith traditions like the Bhagavad Gita, and the Tao Te Ching. We watch films like "Finding Forrester," "Amistad," "The Visitor," "Good Will Hunting," and cultural anthropology videos. Although they may not be overtly Christian, Christ is still found in the truth that is woven into their stories – because "wisdom cries in the streets" – and also in good movies.

I believe Christ comes into my classroom disguised as something my students and I talk about – or perhaps He comes as someone. He has come as Sartre, Aristotle, Buddha, Saint Thomas Aquinas, President Andrea Cook, a homeless person, or as a hopeless student.

The work of a Warner Pacific faculty member is done in the classroom as well as in the community. It includes wiping tears and listening to stories, whether made-up or real. It includes hours of grading and commenting on papers and projects. It includes real-life crises and questions. Above all it includes living out the greatest commandment. Unfortunately, for many, this deep and abiding love that we are called to could be considered the best-kept secret in Portland. But it is our hope at Warner Pacific College, that it not remain a secret any longer. ▀

your story matters



YESENIA DELGADO ATTENDS WARNER PACIFIC AS PART OF THE ACT SIX LEADERSHIP AND SCHOLARSHIP INITIATIVE, OREGON'S ONLY FULL-TUITION SCHOLARSHIP FOR EMERGING URBAN LEADERS WHO WANT TO USE THEIR COLLEGE EDUCATION TO MAKE A DIFFERENCE ON CAMPUS AND IN THEIR COMMUNITIES. WARNER PACIFIC COLLEGE IS PROUD TO PARTNER WITH THE PORTLAND LEADERSHIP FOUNDATION BY OFFERING THE ACT SIX URBAN STUDIES TRACK.

Yesenia Delgado

I first heard about Warner Pacific College during my freshman year in high school. Even at that time, I had a feeling I was meant to attend school here. Later, when I was a senior, Pamela Ryan along with a team from the Portland Leadership Foundation came to Reynolds High School to speak to us about attending college. I had an instant connection with them and even won a laptop computer in the raffle drawing!

I later met Ben Sand during an essay writing workshop I attended at Warner Pacific College. Ben introduced us to the Act Six Scholarship program and explained the application process. After he spoke, I realized the prospect of receiving a scholarship wasn't the real reason I was becoming more interested in Warner Pacific. It was the sense of community and connectedness Ben spoke about that made me feel drawn to the College. The fact that the admission's application was due on my birthday seemed to be an indication I was destined to be here!

I grew up in a single-parent household and I didn't feel like I had anyone else besides my mom to support me. She was my main source of encouragement through my high school years. Once I was accepted at Warner Pacific and became a part of the Act Six Cadre, I immediately felt a sense of family and acceptance. We [Act Six] have a support system known as "Cadre Love" where we learn to lean on and encourage one another.

In the past, I was very independent, never asking anyone besides my mother for help. Now I've learned from Cadre Love that asking for help is a virtue, not a negative trait. Through Cadre Love, we are taught to give each other unconditional love and support,

and we hold one another accountable. We meet twice a month and talk about the things that are happening in our lives; the highs and lows, and all the stuff we are going through. The fellowship and camaraderie we experience feels like family. Cadre Love gives us the opportunity to focus on all the things that God has done for us. This helps to ground us and remind us why we're here.

My major is Human Development with a minor in Business. I hope to become a counselor and operate my own non-profit so that I can be an advocate for women and girls. I imagine having a group home where girls can heal and learn to break the cycle of abuse. I've learned that abuse usually comes from people that we know well - parents, grandparents or close friends. I want girls who are hurting to know, "yes, this happened to you but it doesn't have to define who you are." I want to show them how to experience love in a positive way and help them break the unhealthy cycle of abuse they've learned from their parents and grandparents.

Being at Warner Pacific has changed my life and helped me connect with others in positive ways. As the oldest child in my family, I was always the responsible one everyone leaned on. Here at Warner Pacific I have people I can lean on now for the first time ever. I love it here. This is where I'm supposed to be. ■



JUDITH IS A SUPPORTER AND ADVOCATE OF WARNER PACIFIC COLLEGE, CURRENTLY SERVING ON THE PRESIDENT'S ADVANCEMENT COUNCIL.

Judith McGee

I believe that with success comes responsibility. At my firm, McGee Wealth Management, Inc., based here in Portland, we demonstrate that belief by investing our time and resources to things that have a positive impact in our community and Warner Pacific College is one of our most worthy recipients.

Since receiving my Honorary Doctor of Humane Letters degree from Warner Pacific College in 1993, I have been a strong advocate of the College. I fully support its mission and have great respect and admiration for the dedication to excellence demonstrated by Dr. Andrea Cook and by the faculty of Warner Pacific.

I have been inspired by the College's commitment to engage students from diverse backgrounds. The student stories of achievement and selfless service touch my heart. I applaud the continued expansion of the campus into the greater community because it will grow the College's base of support and influence. Each program I have attended at Warner Pacific has impacted me on two levels: it has given me greater insight into the College's love and support of students, and it has enriched my personal growth.

Serving on the President's Advancement Council, one of the unique ways that I am able to support Warner Pacific is by inviting President Cook into my circle of influence, introducing her to people who will benefit from knowing the College's mission and share an interest in its programs. Additionally, my firm became a major sponsor of the President's Tea in 2012, and we have plans to introduce the opportunity of becoming a Warner Pacific College supporter to our clients and friends by inviting them to "Come and See" Warner Pacific at its best.

I believe in the work of Warner Pacific College and I am excited to see how God uses our investment in students to further His Kingdom here on earth. ■

"I BELIEVE THAT WITH SUCCESS COMES RESPONSIBILITY... WE DEMONSTRATE THAT BELIEF BY INVESTING OUR TIME AND RESOURCES TO HAVE A POSITIVE IMPACT IN OUR COMMUNITY..."



MARK IS A WARNER PACIFIC ALUM AND NEW BOARD MEMBER, SERVING AS SENIOR PASTOR AT CENTRALIA COMMUNITY CHURCH OF GOD IN CENTRALIA, WASHINGTON.

Mark Fast '93

Since my time as an undergraduate at Warner Pacific, I have seen a dramatic shift as the College turns its focus outward, which I think is great! A vibrant sense of community and campus life is important but as Christians living in this city, we must also be actively addressing the bigger issues facing the urban context of Portland. I am excited to see a greater diversity in the student body as well as intentional outreach into the broader community.

No longer is Warner Pacific simply asking questions centered around its own existence, rather we have entered a new season in which the College is embracing difficult questions to thoughtfully consider how it can have a long term impact and be a blessing to the city. "In the city, for the city" is a call to action that truly captures the heart of President Cook and the team of faculty and staff who are rallying around her. As Warner Pacific opens its doors to welcome the city of Portland, I believe that the College will be blessed and continue to grow stronger internally as well... such a parallel to the Church as a whole!

This shift in direction is one of the reasons that I am excited to be a new member on the Warner Pacific College Board of Trustees. Coming out of our most recent set of meetings, in addition to the many initiatives we discussed as a Board, I really felt that I gained new tools which will strengthen my own leadership skills. I am here to support President Cook and her team. I think the vision God is calling us to is an exciting one with great potential, and I hope to contribute to seeing the various components become reality.

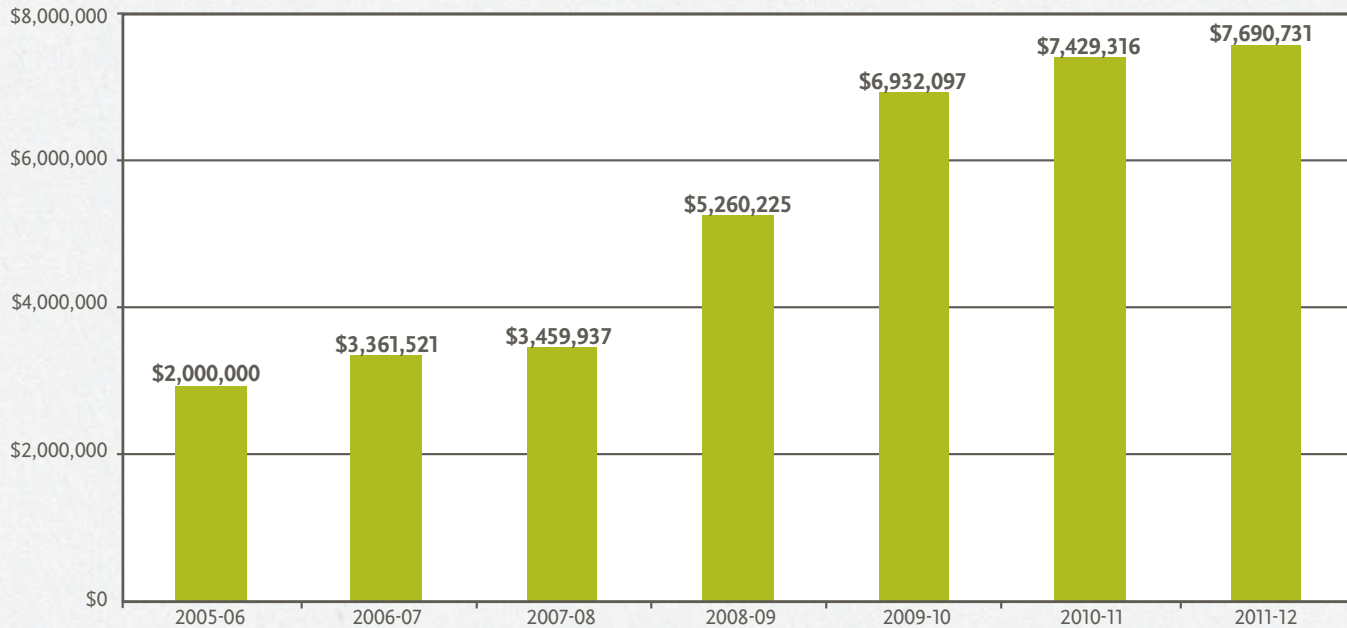
Looking around the Board, I see several familiar faces and an overall group that is genuinely invested in the success of Warner Pacific College. Personally, I look forward to offering a slightly younger perspective, even though it's been nearly 20 years since I graduated from Warner Pacific. As a Senior Pastor, I also hope to bring the experience of the local church together with the mission of the College and help further educate our congregations to engage a changing culture.

I believe the best is yet to come for Warner Pacific College! ■

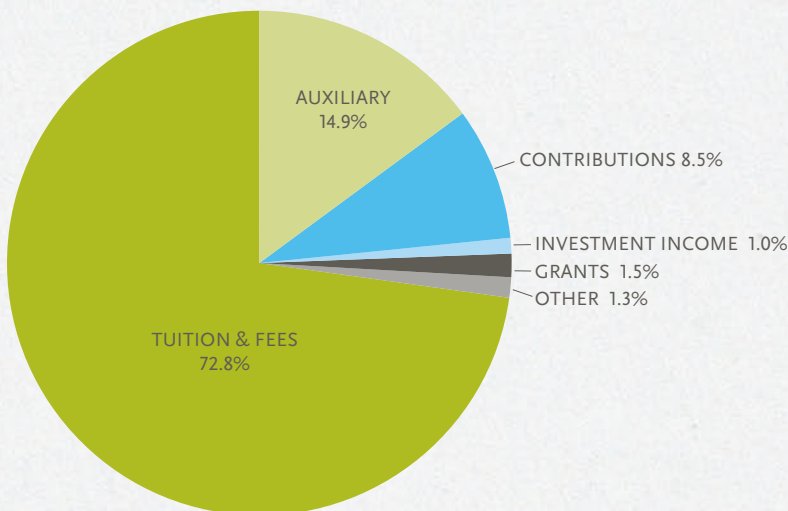
financials

By nearly every financial measure, 2011-2012 was one of our strongest years in recent history, showing increases in net income and total endowment value:

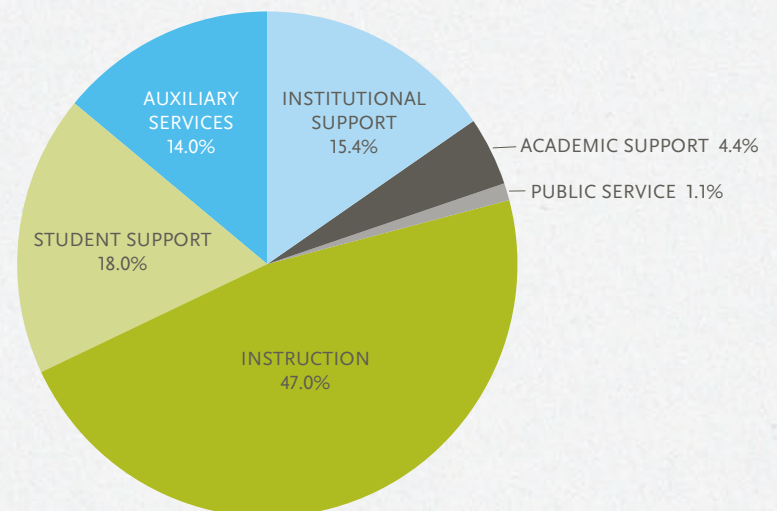
Total Endowment Value



Where does the money come from?



Where does the money go?



Warner Pacific College continues to invest in students through improvements to the physical plant:

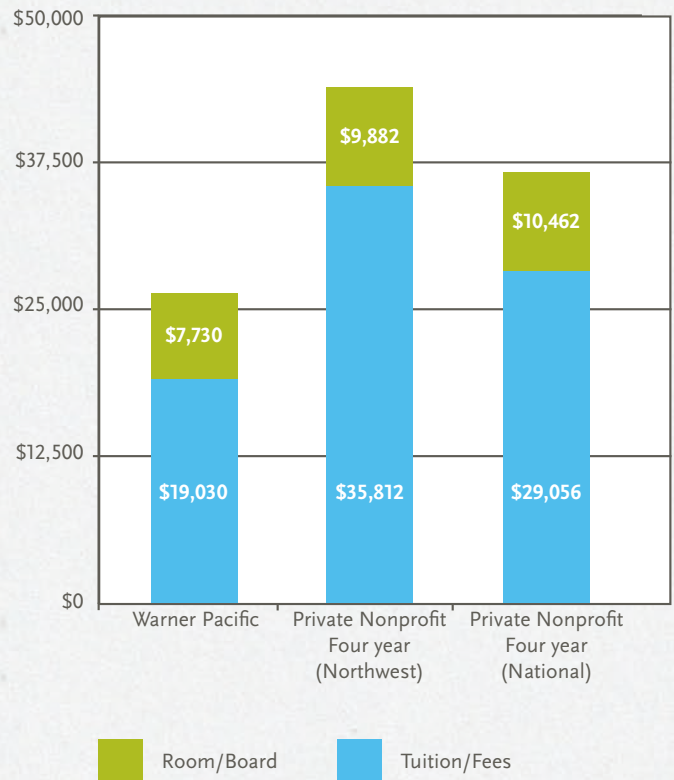
- Purchased a duplex adjacent to campus that will provide additional student housing in the near term and allow for campus expansion in the future
- Began work to update the Master Plan for future campus development
- Created preliminary plans for a new academic building

our students

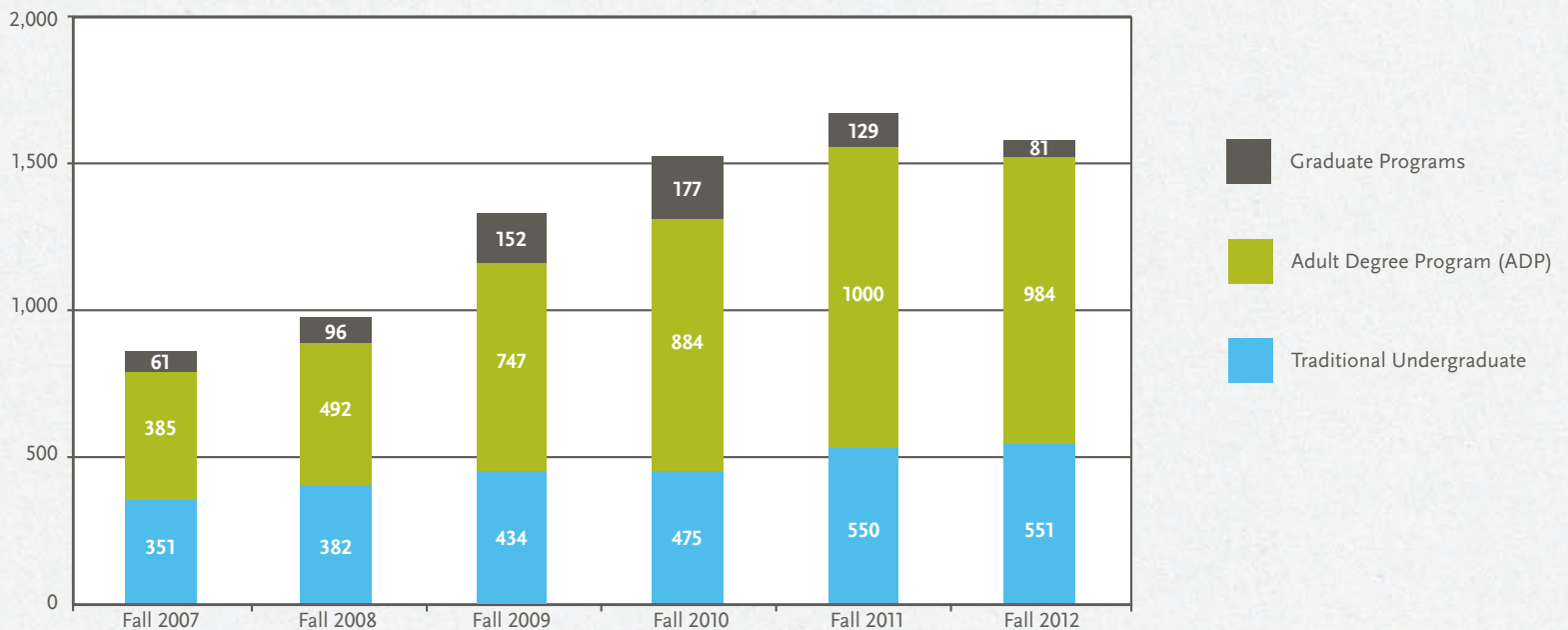
profile 2011 WPC student

- 67.7% from Oregon (67.7% new Traditional students)
- 16.7% from Washington (17% new Traditional students)
- Other states - CA, ID, AK, HI, AZ, CT, FL, MI, MN, NV, TX, UT
- 10 International students from 8 countries (Australia, Canada, Chad, Mexico, New Zealand, Rwanda, United Kingdom, Vietnam)
- 25% Students of Color
- 11.6% Church of God
- 52.6% of Traditional students are residential (50.7% new Traditional students)
- 47.4% Traditional students are commuters (49.3% of new Traditional students)
- 100% Adult Degree students are commuters

2012-13 Comparative Costs



Total Enrollment Over Time



Thank you for your faithful partnership with Warner Pacific College!

Through your continued support, you are expressing your belief in the direction the Lord is leading the College and in the mission and vision of Warner Pacific. Your generosity is building a strong foundation for future leaders who are prepared to serve our city and the world through the love of Christ.

Your contributions benefit scholarships and other academic programs for students, academic initiatives, community outreach, campus developments and technology.

UP TO \$100

Robert & Juanita Adams
Shari Aguilar
Afton Ainsworth
Janice Amburgey
Dan & Donna Archibald
Daniel & LaVerne Arnbrister
Stephen & Diane Arndt
David & Betty Astin
Shannon & Cynthia Awa
John & Hedda Balch
Jeffrey & Coleen Barnhardt
James & Helen Behnke
Bill & Shirley Beltz
Nancy Benson
Tony & Daphne Bethel
Mari Bettineski
Robert & Lola Bixler
Sabrina Black
Jim & Debbi Blanchard
Connie Bless
Donna Braun
Tracy Braun
Walter & Jane Broadwell
Daniel & Vickie Brough
Wanda Brown
Felicia Brown
Harvey & Ruth Buckle
Carl & Bernadine Buckle
Tabitha Bufmack
Katherine Burkey
Donald & Mildred Burkey
Vernon Burns
Edmond Burton
Ellen Burton
Francis Butler
Howard & Bernadine Butz
Durward & Mariet Cage
Janice Calvert
James & Jennifer Cameron
Robert & Amanda Campy
Elaine Carlson
Jerry & Rose Causey
Jean Celia
Enrique & Lidia Cepeda
Roger & Pat Chamberlain
Kurt & Tracy Chandler
George & Laura Chatham
Maricela Chavez
Steve & Wanda Chiles
Todd & Sandy Christensen
Linda Clear
Robert & Patricia Cochran
Deborah Conner
Barbara Conner
Stacy Conway
William & Lois Costine
C. Richard & Ardys Craghead
Kenneth & Crystal Cram
Marjorie Crass
Arleta Crenshaw
Shawna Damon
Joe & Sharon Davis
Jim & Mendy Davisson
Jerry & Sandra Davisson
Gregory & Katherine Dean
Thys & Rina DeHoop
Karla Delap
Herbert & Shirley Dietz
Jerry Dietz
Ralph & Doris Dockter
James & Patricia Dorris
Cecil & Ethel Dorsey
Roger & Penelope Dorsey
Richard & Roberta Doster

Sally Dougherty
Frederick & Denise Douglas, Jr.
Elizabeth DuPriest
Colleen Durkin-Bowers
Jill Edgin
William & Joan Edwardson, Sr.
Fay Eliopoulos
Kraig Etzel
John & Ardell Fair
Lani Faith
Wilferd & Marlene Felchle
Catherine Feller
Samuel Fenstermacher
Nancy Finsaas
Carol Fitzgerald
Edward & Celia Fitzgerald
Mimi Fonseca
Calvin Fowler
George Frankovich
Beth Freeman
John Fries
Elmer Frimoth
Janelle Furman
Brian & Nancy Furumasu
Nathan Furumasu
Beth Furumasu
Otto & Lois Gaither
James & Amy Gallegos
Janet Gehring-Liming
Benjamin & Rachel Geiger
Richelle Gibson
Roger & Aiga Gilbert
Iris Goff
June Gomes
Robin Gordon
Sandra Green
Valerie Grijalva
Michael & Susan Gurney
Nicholas & Norma Haag
Fadia Hadeed
Mildred Hadley
Hazel Ham
Garth & Kathryn Hamilton
Francis & Anne Hanchek
Gary & Edith Hanke
Charles & Peggy Harbick
Bonnie Harding
Wilbur & Rebecca Harris
Robert & Sharlene Harrison
David & Miriam Harrison
Deborah Harrison
Clifford Harrison
Alison Hart
Lawrence & Joyce Hartman
Mary Ann Hassold
Kim Haws
William & Lisa Hay, Jr.
Fredric & Karen Hazen
Rebecca Hazen
Donald & Delma Hazzard
Naida Hedgepeth
Dalyn & Gayla Helbling
Dale & Ruth Hency
Gerald & Elizabeth Hency
Kaylene Hess
James Hester
Leon Hicks
Tom & Anita Hicks
Sharon Hicks
Maxine Higgins
Bradford & Terri Hill
Maryann Hocker
Bonnie Hogard
Tim & Elaine Hoitink
Patricia Holzbach

Samuel & Adele Hooker
Keith & Juanita Hossler
Jeanne Hossler
Lynden & Wanda Howard
Ronald & Cheryl Huffman
Dwight & Tracy Hughes
Isaac & Rebekah Hurst
Georgia Hurt
Paul & Nova Hutchins
Lewis & Barbara Hyslip
Jeannette Isaacson
Ron & Julie Jackson
Kenneth & Judy Jackson
Elaine Jackson
Jarod & Alma Jacobs
Maria Jaime-Aguirre
Florence Jarvis
Martha Jensen
Donna Johnson
Charlene Johnson
Michael & Darbi Johnson
Juanita Johnson
Ray Johnson
Ruth Johnston
John Juhl
Scott Justice
Jerry & Judith Juve
Richard & Adele Kehoe
Shirley Keith
Beverly Kelley
Kirk Kelly & Nancy Guentner-Kelly
Philip & Mary Kerr
Leonard & Nelle Kesterson
Jeannette King
Ruth Kirks
Edward & Marion Kissler
Matthew & Lora Klaus
Gerald Kline
Lois Klune
Ruth Knott
Jason Knudeson
Timothy Kohaya
Teresa Kralj
Claude & Elizabeth Kretlow
Curtis Krieger
Kerry & Shanon Kuehl
Douglas & Jeri Kuns
Virginia Kuns
John & Sally Kuykendall
James & Sylvia La Voie
Ernest LaFont
Michael & Carol Landers
Diane Lawrence
Danielle Lawrence
Byrum Lee
Elaine Lee
Gilbert & Rose Lewis
Sanford & Donna Lewis
Gary & Karen Liedtke
Elie Linden
Carleton & Mary Lindgren
Elisabeth Little
William & Eileen Lobdell, Jr.
Crystal Lockyear
Gilberto & Lilian Lozano
Belinda Luzader
Virginia Mackin
Bill & Janet Madill
Timothy & Kammi Maertens
Gary & Annette Mangle
Jonathan & Lyndsy Manz
Leslie Marchant
Jesse Mark
David & Peggy Markle
William Marschall

Elton Martin
Honerhea Martin
Tamara Marvin
Mark & Stephanie Mathis
Tamara Mayes
Scott & Amy McAllister
Douglas McClay
Jeffery & Marilyn McCoy
Kevin McCrann
Juanita McDaniel
Randy & Teresa McGuire
William & Marni McNeely
Jeff Melidian
Tami Mills
Joe & Mary Minkler
Jeffrey & Diane Minor
W. & Billie Monroe
Sherry Moore
Richard & Nadine Moore
Betty Moore
Diane Morgan
Joanne Morris
Myong Morse
Richard & Danette Moss
Erma Mouser
Miranda Moy
Michael & Sherri Mugford
Tim & Elizabeth Murphy
Kerry & Lisa Naff
Robert Nealeigh
Loren & Dora Nelson
Barbara Nesmith
Geannie Newell
Dana & Diane Newkirk
Cindy Nicholas
Charles & Phyllis Nielsen
Paul & Gussie Ninemire
Margaret Ninemire
Sunny Norfleet
Diane Noriega
Julianna Oden
Timothy Oenning
Susan Olds
Charles & Lois Olin, Jr.
Carol Olson
Greg & Cynthia Olson
Larry & Joyce Ortman
Charles & Bonny Osburn
Kenneth & Virginia Osgood
Vern & Sylvia Page
Jeong-Eun Pak
Thomas & Candita Parker
Charles & Amelia Patrie
Rosemarie Pavy
Lorna Petersen
Julie Petersen
Sandra Peterson
Thomas & Wendy Peterson
Jerry & Jeannine Phillips
Maury & Nancy Plumlee
Leslie Porter
Troy & Connie Porterfield
Daryl & Deloris Posey
David Powell
Vince & Pamela Powell
Edward Powell
Louis & Margaret Pratt
Jennifer Proehl
Stephen & Shirley Radford
George Reed
Velma & Rudolph Rehbein
Ruth Reidlinger
Richard & Susan Remsburg
David & Ruth Ann Reynolds
Dean & Kathie Richards

Jerry Richardson
Nancy Ridgeway
Steven Ritchie
Audrey Roberts
Barbara Robinson
Carolyn Robinson
Caleb Rosado &
Waneen Aden White
Leslie Rose
Thomas & Kathleen Ruckman
Linda & David Rudawitz
Clem & Helen Ryan
Cheryl Sampson-Dutro
Nathan & Jennifer Sanow
Katrina Sartin Matano
Robert Saunders
Susan & Bill Schlink
Stuart & Joretta Schmaltz
Larry & Rickilyn Schneider
Renee Schwab
Gordon & Kerri Scott
Joel & Rinda Scott
Terry & Donna Scott
Jan Scrivner
Ted & Elizabeth Scrivner
Boi Shadduck
Idell Shaffer
Charles & Dianne Shaffer
Ila Shepard
Joe Shepherd
Wayne & LaDonna Shielee
Richard & Sharon Shorb
Sarah ShROUT
David & Karon Shultz
Juanita Sinclair
Jordan & Andria Skornik
Dennis & Linda Smith
Harry & Marilyn Smothers
Gerry & Betty Snow
Joyce Spear
Jerald Spires, Sr.
Roy & Lynn Sprunger
Ernie & Betty Staley
Jodi Stapleton
Jarred & Meghan Staup
Deborah Stavig
Steven & Rhonda Stecker
Gerhard Steinke
Ellen Stiles
Richard & Kassy Stober
Russell & Diane Straight
George & Donna Stuart
Marie Stuart
N. Hope Stubbs
Roger & Earline Stuck II
Lolita & Richard Stuthard
Sherron Sugden
Stanford & Debbie Swank
Earl Swigert, Jr.
Gary & Lois Swope
Freddie Tapuro
Steve Tassinari
Lynda Taylor
Lorraine Taylor
Verne Tedder
Todd & Diane Thielen
Scott & Jenna Thompson
Judy Tiesel
Alan & Gwen Tinnerstet
Mary Ann Truglio
Thomas & Margery Vale
Christopher Veley
David & Janice Vigna
Brian & Vickie Waldier
William & Clarice Walker

Carolyn Walker
Aaron & Katie Walton
Woody Warmoth
Tom & Rita Waters, Jr.
Micheline Westlake
William & Jane Whitehead III
Kristene Wickham
Darrell & Daphne Williams
Steven & Barbara Williams
Jeffrey & Stacy Windahl
Dolores Wright
Jonathan Zall
Kathy Zinsli

\$101 - \$500

Anonymous Donor
Merle & Carol Abraham
Murray & Sandra Ahlquist
Lynn Allen & Ann Hemenway-Allen
Marvin & Barbara Allenbrand
Nadine Anderson
Stephen Angove
Tim & Jan Arensmeier
Ahmed & Adrienne Armstrachan
Gregory Arntson
Robert & Mary Beck
Donlad & Janice Berghouse
Joy & Demarcus Best
Jess & Candice Bielman
Martha Brallier
Jim & Kathryn Brickley
Brian Brown
Philip & Barbara Bruzesse
Stanley & Fern Bucknum
Donald & Regainia Buss
Lori Casteel
Jesse Chambless, Jr.
R. Mike Chandler
Nathaniel Chiles
Holley Clough
Thomas Cody
Gavin & Michelle Collins
Harold Conrad
Wayne & Jean Cook
George & Vydell Cramer
Judith Dix
Linette Dobbins
Jeanene Dodge
Susan Donahue
John Douglas, Jr.
Nathan & Maryann Dunbar
William & Patricia Dunn
Linton Edwards
Arthur & Norma Eikamp
Cecil & Annette Evans
Kenneth Evans
Florence Falling
Dick & Kathleen Fankhauser
Dallas & Linda Fast
Daniel Fields
Wilmer & M. Fischer
Beverly & Bob Fitts
Warren Foltz
Louis Foltz
LaMyrtha Frazier
Barry & Kristi Freeman
Charles & Amy Furumasu
Otto & Laurie Gaitner, Jr.
Bruce Garrison
Thomas Gaumer
Scott & Andrea Genovese
Joe Gilliam, Jr.
Luke & Jillana Goble
Ann Gray
Charles & Zona Gray
Simeon & Georgie Greene, Sr.
William & Beverly Gregg
Gail Grimston
Robert Grove
Virginia Grubb
Robert Gulick, Sr.
Valery & Jessica Gurin
Mark & Debbie Haddock
Cody & Melanie Harrod
Robert & Cheryl Haskell
Jill & Dennis Hayes
Mary Hazlett
Linda Heitzman
James Hernandez
Owen & Joyce Hinkle
Janet Hocker
Lorraine Holmes
Glen & LaRene Hossler
Hanna Howard
Eileen Hulme
Randy & Sandra Irwin

Everett Jensen
Savas & Olive Joannides
John & Gwen Johnson
Portia Jones
Carol Kadel
Melvin Iverson &
Alice Kienberger-Iverson
Tamron & Tiffany Keith
Arthur & Judy Kelly
Alissa Keny-Guyer
Amanda Kerber
Edward Kerns
Douglas & Norma Kernutt
Paula Kinney
Eli Kleinsasser
Carol Kopp
Gordon & Marian Kunke
Harold & Donna LaFont
Phillip & Karen Lander
Patricia Larson
Robert & Carol Lawrence
David & Colleen Lee
Herbert Lewis Estate
Hillman & Janet Lueddemann
Shannon Mackey
Vernon & Betty Martinazzi
Steve Mathews
Charles & Mary Ann McMahon
Terry & Renee Meyer
Gary Moore
Robert & Lois Moore
J. Kelley & Diana Moore
Janice Neely
Jane & John Nelson
Curtis & Lorraine Nielsen
Mark & Lynn Nielson
Marv & Debera Ortman
Jeffrey & Heather Owen
Heidi Owsley
Ron & Ruth Palmer
Joseph & Jeannie Pang
Marilyn Peck
David & Kim Peck
Martha & Walter Perry
Joseph & Connie Phillips
Dennis & Barbara Plies
Manfred & Linda Plikat
Rodney & Pamela Plimpton
Bill & Jean Pyne
Richard & Janet Quesenberry
Stephen Rajewich
John & Jennifer Reeher
C. Todd & Angela Rettmann
Kathryn Reynolds
Kim Richards
Rob & Betty Rickard
Gale & Donna Roid
LaVern Root
Michael & Pamela Ryan
Benjamin & Maile Sand
Robert Sautter
Eric Schupp
David & Arleta Schwarz
Howard & Sally Schwarz
Ed & Nancy Scrivner
Duane & Colleen Shaw
Douglas & Diane Shrock
Benjamin & Bobbi Smith
Lois Smith
Jay Sparkman
Hildegard & Ray Tadic-Wolf
Kim Taylor
William & Debi Teague
David & Maria-Eugenia Terrell
Patrick & Rebecca Thomas
Karen Tindall
Charles & Betty Townley
Victoria Trabosh
Bradley & Paula Tripp
T. Christopher & Tracy Turner
Andrew & Sarah Velasquez
Eric & Traci Vogt
Carol Walters
David & Kerian Walton
Paul & Sharon Webb
Ethel Willard
Robert & Lila Winger
David Wood
Charles & Thelma Wyatt
Gene & Linda Yamashita
Craig & Valerie Zeisler
James Zeller

\$501 - \$1000

Anonymous Donor
Elizabeth Baker

Deborah Banks
Jay & Jan Barber, Jr.
Timothy Barker
Donald & Marj Bartlett
Val & Joellen Bender
Bernie & Cynthia Buckle
Adrianna Carr
Lucile Chapelle
Robert & Barbara Christensen
Gene & Michele Christian
Victoria Cumings
William Dobrenen
Donald & Lori Doe
Troy & Kathryn Eastwood
Gloria Foltz
Myron & Priscilla Forsyth
Douglas & Susan Hamilton
Donald & Robyn Heerlein
Gale & Marelyn Hency
Victor & Deborah Hernandez
Elmer & Sandra Jantzen
Donald & Betty Jo Johnson
Ione Keen
Bruce & Judy Kelly
Wanda Kernutt
Wayne & Lori Kuechler
Ralph & Helen Little
Maurice Macy
Richard & Helen Matzke
Charles Defoe & Judith McGee
Eleanor Newcomb
Steven & Karen Olson
Ervin-Marcus Parker
Bill & Bonni Parks
Galen & Toni Pauls
Duane & Jan Petersen
Catherine Peterson
Patrick & Kimberly Pierce
Michael & Stephanie Pollard
Alfred Reinholz, Jr.
George & Norma Schmidt
Troy & Mary Spoonemore
Hazel Stewart
Ted Takamura & Raynette Yoshida
Dan Tracy
Perry & Cassandra Trentaz
Todd Ulmer
Gary & Christina Yarco

\$1001 - \$2500

Stephen & Borgny Anderson
Derek & Heidi Bradford
David & Janet Brown
Maurice & Dondeena Caldwell
John & Sarah Castles
Bryan Cook
Cole & Linda Dawson
Robert & Connie DuPriest, Jr.
Helen Flynt
Kurt & Jennifer Gilge
Charles & Freda Hamilton
Robert & M Carolyn Magathan
Roger & Pauline Martin
Rand & Phyllis Michael
Kathleen Moss
Everett & Sharon Norris
Daniel & Roberta Petersen
John & Sharon Pilon
Steven & Cynthia Pollard
Al & Mary Ross
Terry & Betty Jo Shroud
Vernon & Paula Smith
Robert & Diana Stewart
Gregory & Suzanne Swanson
Joel & Janine Tallman
Mary Teague
Bruce & Linda Valentine
Bart & Becky Valentine

\$2501 - \$5000

Anonymous Donor
Gracianna Black
Kevin & Sara Bryant
Florence Eudy
Victor & Becky Gilliam
Robert & Janet Hargis
Robert & Claudia Hemenway
Stephen & Patricia Hoover
Ruth Laughlin
Sergio & Sheri Lozano
David & Marilyn Nasman
Kenneth & Marjory Renfrow
Clifford & Aileen Shrock
Steven & Tami Stenberg
Dale & Gail Stockamp
Bette Suderman

James & Terri Teague
Drs. John & Betty Thompson

\$5,001 - \$10,000

Anonymous Donor
Ida Allenbrand Estate
Verl Cochran Estate
Jeffrey & Suzette Davisson
Greg & Margaret Englund
Dale & Monica Monroe
Alonzo & Vada Monroe
Timothy & Lorrie Reiterman
Charles Robinowitz
Julia Shroud
Evelyn Skaggs Estate
Lola Van Campen

\$10,001 - 20,000

Anonymous Donor
Deidre & Edmund Bergler
Maribeth Collins
Dr. Andrea Cook
Barbara & Mark Denton

\$20,001 - \$30,000

Leola Miller Estate

\$100,001 - \$110,000

Violet Davis Estate

ORGANIZATIONS

Anonymous Donor
Alston's Corner Assembly of God
Anchorage Baptist Temple
Antelope Road Christian Fellowship
Association of Church of God,
Oregon & Southwest Washington
Athletic Transportation Services LLC
Bank of the West-Business
Blue Mountain Community
Church of God
Branches-A Christian Church
Calvary Chapel of Vista
Christ Community Church
Christian Life Center: Bend
Christian Women Connection:
Central California
Christian Women Connection:
Oregon
Church of God Aloha
Church of God Edmonds
Church of God Elma
Church of God Garden Grove
Church of God Ministries
Church of God Montesano
Church of God Powers
Church of God Seventh Day of
Portland
Church of God Springfield
Church of God Tigard
Clark Family Trust
College Park Community Church
Community Church of God: Centralia
Community Church of God:
Gales Creek
Community Church of God: Rainier
Community First Church of God
Cornerstone Community Church
of God
Cornwall Church of God
Countryside Community Church
Degrees of Change
Door of Hope Church
East Side Church of God
Eastside Foursquare Church
Enterprise Rent-A-Car
Erwin T. Koch Charitable Trust
Evergreen Christian Center
Fairview Church of God
Faith Baptist Church: Lincoln City
Fellowship Bible Church
First Church of God: Albany
First Church of God: Bradenton
First Church of God: Clarkston
First Church of God: Fresno
First Church of God: Juneau
First Church of God: Klamath Falls
First Church of God: Pac Grove
First Church of God: Redmond
First Church of God: Sacramento
First Church of God: Staunton
First Church of God: Tulare
First Church of God: Vancouver
First Presbyterian Church of Altadena
Fourth St. Church of God
Friendly St. Church of God

Gateway Baptist Church
Grand View Baptist Church
Gresham Ford
Harvest Community Church
High Lakes Christian Church
Highland Park Community Church
Hillside Church of God
Hockinson Community Church
Holladay Park Church of God
Hoodview Church of God
Hucrest Community Church of God
Integra Telecom
Intel Foundation
Iseli Foundation
Jackson Foundation
Lola Young Trust
K. Arakelian Foundation
KPMG LLP
LaBelle Nails
Lents Gilbert Church of God
Life Church
Living Water Church of God
Living Way Fellowship
Lynchwood Church of God
Majestic Eagle Agency Inc.
Mark and Barbara Denton Family
Foundation, Inc.
McGee Financial Strategies, Inc.
Melikian Farms, Inc.
Metro Church of Christ
Mid Valley General Agency
MJ Murdock Charitable Trust
Mt. Scott Church of God
Mt. Tabor Presbyterian Church
Naches Presbyterian Church
Nampa First Church of the Nazarene
National Christian Foundation
Neighborhood Chapel Church
of God
New Hope Community Church
New Horizons Comm Church
North Creek Church
North Modesto Church of God
Oak Park Community Church of God
Olympia-Lacey Church of God
Open Arms International
Oregon Alliance of Independent
Colleges and Universities
Oregon Community Foundation
Oregon Independent College
Foundation
Parker Veterinary Clinic
Pleasant Prairie Church of God
PNC Foundation
Portland Christian Schools
Portland General Electric
Portland Volleyball Club
RB Pamplin Corporation
Redeemed Outreach Center
Richard Hennessy Insurance
Agency, Inc.
Richmond Community Church
River St. Church of God
Rivers of Peace Church
Rockwood Church of God
Rogers, Inc., Colvin's Pub & Grill
S.D. Deacon Enterprises, Inc.
Schwab Charitable Fund
Sodexo, Inc. & Affiliates
Sonrise Baptist Church
South Bay Church of God
South Hills Evangelical Church
St. John the Evangelist Episcopal
Church
Standard Insurance Co.
Sunset Park Community Church
The Palau Foundation for World
Evangelism
The Standard Employee Giving
Campaign
Todd Christensen Construction
Turning Point Church Lebanon
Umpqua Valley Christian School
Wells Fargo Foundation
West Coast Drape
Westport Community Church
Westside Christian High School
Willamina Free Methodist Church
Winding Road Community Church
Women of the Church of God:
Nebraska
Women of the Church of God: Salem
Wyoming General Assembly of the
Church of God
Zion Evangelical Lutheran

Calendar of Events 2012-13

NOVEMBER

- 22-23** Thanksgiving Holiday
- 26** Concert Choir 6:00 pm/Chorale, 7:00 pm
Festival of Lights at The Grotto
- 28** Vocal and Instrumental Jazz Concert, 7:30 pm
McGuire Auditorium

DECEMBER

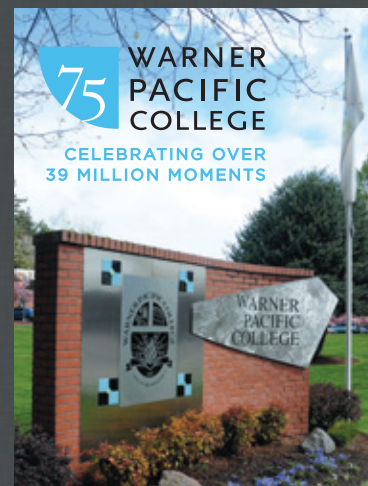
- 1** Christmas Advent Brunch, 9:30-11:30 am
McGuire Auditorium
- 2** Choral Concert, 3:00 pm, McGuire Auditorium
- 5** Stakeholder's Breakfast, 8-9:30 am, McGuire Auditorium
- 6** Advent Chapel/Music Department, 10:00 am
McGuire Auditorium
- 7** Wind Ensemble Concert, 7:30 pm, McGuire Auditorium
- 11** Christmas Reception for Pastors, 4-5:30 pm
President Cook's Home
- 15** Winter Commencement, 10:00 am
New Hope Community Church
- 24-28** Christmas Break Holiday
- 31** New Year's Eve Holiday

JANUARY

- 1** New Year's Holiday
- 14** Spring Semester Begins
- 21** MLK Day of Service
- 26** Church of God How To Convention
Oak Park Church of God, Salem

FEBRUARY

- 1-2** Knight Life
- 14-16** 75th Anniversary Homecoming
- 14** Alumni Council Spring Meeting
- 23** Scholarship Day for incoming students



Join us for the
**75th Anniversary
Homecoming**

February 14 • 15 • 16, 2013
McGuire Auditorium

Come and Go Reception
Saturday from 10am-2pm
Program at noon.