

WARNER PACIFIC COLLEGE

PRESIDENT'S REPORT

FISCAL YEAR 2009 - 10





Andrea P. Cook, Ph.D.
President

At Warner Pacific College, we are privileged to serve students who are on a journey of personal, intellectual and spiritual discovery — and it is our unique heritage, location and mindset that set us apart in this work. Founded in 1937 to support the work of the Church of God Reformation Movement (Anderson, Ind.), Warner Pacific College is rooted in Wesleyan Holiness theology, which not only promotes personal holiness, but also social holiness. Inclusion and unity are tenants of our faith tradition.

Because of this heritage, Warner Pacific College is preparing faithful servant leaders who have strong spiritual moorings, a deep sense of Christian service to others, critical thinking skills to address economic and societal needs, and the ability to adapt and lead in a rapidly changing world.

Through our various academic programs, as well as our Humanities core curriculum, students realize that truth is not always a matter of contrasts, but often shades of gray. In addition, our urban location makes available professional internships, volunteer opportunities, and work experiences where students can apply the knowledge and skills they've developed.

Our Christian mission also brings with it a moral responsibility to reach students who have historically been underserved. Our traditional tuition remains one of the most affordable among private colleges in the Northwest. We have also established a partnership with the Act Six Leadership and Scholarship Initiative, through which young, emerging urban leaders receive full need scholarships. In addition, our Adult Degree Program is enjoying tremendous growth as working adults realize their long-standing dreams of earning a college degree.

Due in part to these positive developments, Warner Pacific closed the 2009 - 2010 fiscal year with a positive net variance of \$495,296. This was a tremendous achievement during an economic downturn and a tribute to God's faithfulness.

However, the broader context is that for the previous two fiscal years, the college experienced operational deficits of \$1,644,548 ('07 - '08) and \$679,567 ('08 - '09), necessitating the use of a line of credit to sustain operations. Our positive net variance last year begins to pay down our accumulated operational deficit and gives us tremendous momentum as we move forward.

Warner Pacific College is here to impart hope to our students through strong academic training, spiritual development, and an authentic ethos of service to our city. I believe great things are in store for Warner Pacific as we live out that mission. I thank you for your partnership in this essential work.

Warmly,

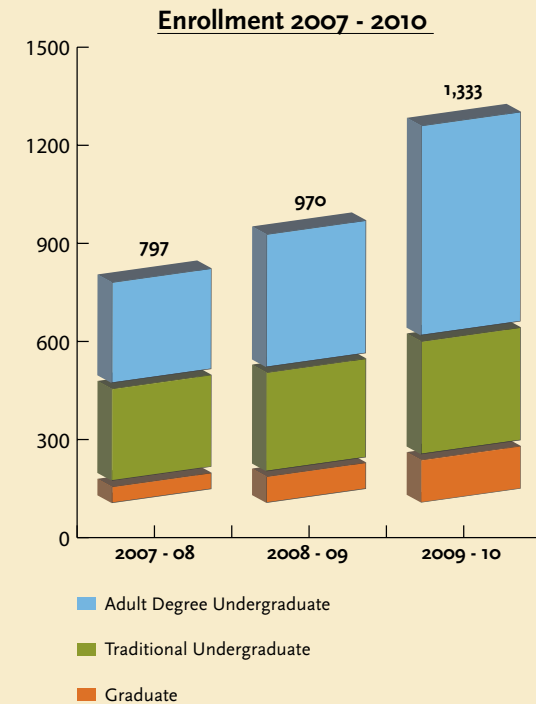
A handwritten signature in cursive script that reads "Andrea Cook".

Andrea P. Cook
President

We are preparing faithful servant leaders who have strong spiritual moorings, a deep sense of service to others, critical thinking skills to address economic and societal needs, and the ability to adapt and lead in a rapidly changing world.

College Highlights 2009 - 2010

- Warner Pacific ranks 12th among baccalaureate colleges in the West and is named one of America's best values by *US News and World Report: America's Best Colleges 2010*.
- Andrea P. Cook, Ph.D. inaugurated as Warner Pacific College's seventh president.
- New undergraduate majors in urban studies, communications, health care administration, as well as a new master's degree in accounting.
- Several faculty members publish articles in prestigious journals, present papers and lead conferences for national conventions, and write new or substantially revised books.
- Men's soccer team wins 2009 Cascade Conference championship.
- Warner Pacific named to Presidential Honor Roll for Community Service.
- Fall enrollment increases by 37 percent, reaching an unprecedented 1,333 students.
- First annual President's Tea welcomes 275 women and raises funds for student scholarships.
- First cadre of Act Six Leadership and Scholarship Initiative students selected.
- Students provide over 7,200 total hours of community service, with an estimated economic impact of \$132,135.
- Mission teams comprised of students and employees serve in San Francisco, South Dakota, New Zealand, Myanmar, and Tanzania.
- Adult Degree Program opens learning sites in Wilsonville and in Portland at the former Cascade College campus.
- Faculty and staff members lend their experience to area churches, businesses, schools, civic organizations, and professional groups.



Searching for truth within healthy tensions

Professor Dennis Plies, Ph.D.

What's so special about paradox? Everything, according to music professor Dennis Plies, one of a number of faculty members who teach Warner Pacific's signature Humanities 310 course "Faith, Living, and Learning" as part of the traditional program's humanities core curriculum.

Plies says the study of paradox is about finding truth, even if that truth reveals philosophical tensions where apparent contradictions coexist. Helping students appreciate and find peace within the tensions opens up a richer understanding of faith and the human condition.

"I was taught that if you have doubt, you have no faith. That's baloney," said Plies. "Take the paradox of Mary the mother of Jesus. She had two forces going on [when she became pregnant with Jesus]. Spiritually she knew what was happening, but she also had these human reactions of 'How could this be happening to me?' To have faith means you can doubt, otherwise, what is faith? It's a paradox."

Plies says life is less about contrasts, and more about simultaneous truths, like a group of jazz musicians who enjoy the freedom of improvisation only by agreeing to stay within the boundaries of chords and time signatures.

"To the degree that we have agreement, then we have more freedom," said Plies. "In the workplace, in the home, in recreation, what's our agreement? Do we know our purposes? What kind of freedom are we allowing [ourselves]?"

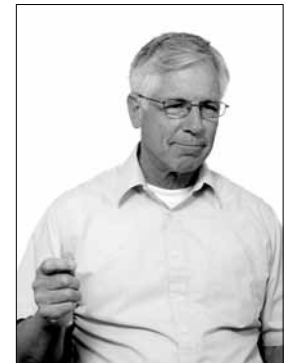
Plies says the humanities core curriculum is a showcase for this "rich simultaneity" where students create a safe place in which to share from the depths of who they are and how they operate.

"It's ontological," said Plies. "It's all about their deepest part. That's what we are aiming at. I don't allow them to pontificate or preach or persuade, but rather to share who they are on a day-to-day basis. When they do that, it frees them up. Now it's about their lives."

More than an intellectual exercise, Plies believes that embracing paradox can bring relief to students who are preoccupied with discovering God's specific will for their lives, like a treasure they have to uncover. Plies doesn't think living in God's will has to be so complicated.

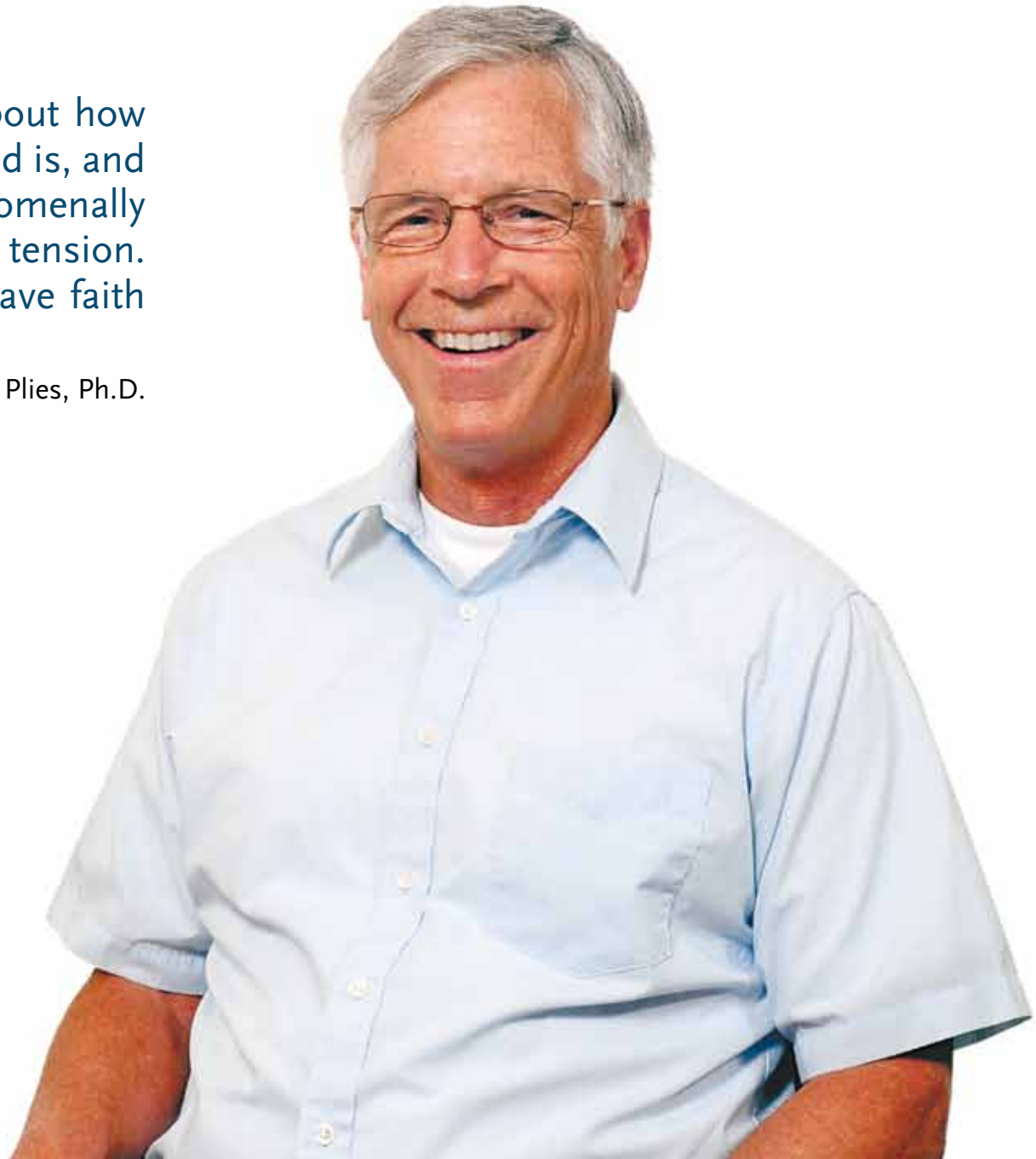
He describes a conversation with a student who was questioning his motives in helping a friend take a homeless man to lunch. The student wondered if he had done it for altruistic reasons or to impress his companion. Plies assured the young man that the issue wasn't whether his motives were pure, but that he served a person in need, and, through reflection, recognized the diverse motives coexisting inside himself.

"That's what life is," said Plies. "You have these honest questions and they are very diverse. Every morning I think about how distant and mysterious God is, and at the same time, so phenomenally intimate and present. It's a tension. Both are true. I have to have faith for that."



“Every morning I think about how distant and mysterious God is, and at the same time, so phenomenally intimate and present. It’s a tension. Both are true. I have to have faith for that.”

- Music professor Dennis Plies, Ph.D.







Investing in emerging Christian leaders

Deidre “Deedee” (Dunham) ’65 and Ed Bergler



There are plenty of obvious reasons why **Deidre “Deedee” (Dunham) ’65** and **Ed Bergler** would donate to Warner Pacific College. Deedee spent two years as a student in the 1960s, and Ed served on the Board of Trustees for 15 years. Their youngest son, **Brian Bergler ’90** (a vice president for Bank of the Cascades), is a graduate, as are some of their closest, lifelong friends.

Yet, the overarching reason the Berglers support Warner Pacific College comes down to one word: leadership. They want to support new generations of leaders who will grow in knowledge and maturity as a result of the college’s high academic standards and authentic Christian atmosphere.



“Warner Pacific gives students the strength and confidence they need to become skilled and effective leaders,” said Deedee.

The Berglers have been involved with Warner Pacific for over four decades. Ed, a retired engineer, served on the Board of Trustees from 1990 to 2005, a time when the college faced some daunting financial challenges, including the closure and subsequent revival of intercollegiate athletics. However, the Berglers’ support never wavered.

Ed hopes current and future donors would realize how much they can do collectively to support Warner Pacific College.

“People should feel free to give, even a small amount, because if there is a number of people doing that, then it’s going to be

a large amount,” said Ed. “There are rewards in that. Come on campus and see what those students are accomplishing and see what happens to them after graduation. There are so many pastors and leaders on the West Coast that have come from Warner Pacific. Give what you can beyond what you’re normal giving is to your church. God will bless it, and He has.”

“Warner Pacific gives students the strength and confidence they need to become skilled and effective leaders.”

- **Deidre “Deedee” (Dunham) Bergler ’65**
Alumna and donor

The Berglers say the recent upgrades to the college campus, including the remodeling of Egtvedt Hall and McGuire Auditorium, demonstrate pride, self-respect, and good stewardship. Deedee says that, ultimately, God will provide, both for the college and for those who give.

“Our philosophy of giving is that you can never out give the Lord,” she said. “We don’t have a huge income . . . [but] we feel we live in abundance and we know that God has provided for everything. You know, as you give, He provides, and that is our bottom line belief, so giving here is just another example of how God provides abundantly beyond what we would ever want to do for ourselves. And there is joy in it.”

Using her education to be a voice for families

Kara Busick '08

One morning last year, **Kara Busick '08** received a phone call at work from a convicted felon and former drug addict who had placed her children for adoption years before. Busick is a post-adoption coordinator at Christian Family Adoptions (CFA), in Portland, Ore. and facilitates ongoing communication between biological and adoptive families. She takes calls like this all the time.

The caller was grieving because it was the birthday of a daughter she hadn't seen for ten years. Through tears, the woman asked if Busick could send a photo of her little girl each year so she could keep up with her development.

As a result of the education and training Busick received at Warner Pacific College — not to mention being an adoptee herself — Busick was, in so many ways, the ideal person to help that mother navigate the emotional landscape that adoption entails.

“To be responsible for other people as a knowledgeable professional is a huge undertaking,” said Busick. “What a revelation when you realize that you have officially moved from watching others do emotionally compelling work [while a student], to being the person doing it. It is thrilling, exciting, and, a little scary. It has been a walk of faith for me.”

Busick was adopted as an infant from Calcutta, India. She grew up in Portland, Ore. and attended Warner Pacific with the help of scholarships. She studied human development

and family studies, as well as music. Busick says that during her four years at Warner Pacific, she received everything she had hoped for in a college education — the skills, the spiritual life, the friendships, and the career preparation. In fact, she landed the job at CFA after serving a lengthy internship at the agency.

“Warner Pacific gave me a safe place to learn how to ask questions, articulate ideas, and develop the essential skills I need in a competitive workforce,” said Busick. “It gave me knowledge and real-life experiences that I could pick up and carry with me into a work setting.”

In addition to her work at CFA, Busick is the reigning 2010 Miss Clackamas County and used adoption awareness as her platform when she competed at the 2010 Miss Oregon Pageant in July. She also performed a solo with an electric violin during the competition.

Busick says that one of the biggest lessons she learned at Warner Pacific is the importance of being a lifelong learner. She is looking to pursue a graduate degree in social work.

“Everyday I find myself reaching into that ‘tool kit’ I built through my undergraduate degree, using it to make the best possible professional decisions when working with vulnerable people,” said Busick. “I praise God for strategically placing me. Each day I take a step forward, trusting that it is the right one.”



“Warner Pacific gave me a safe place to learn how to ask questions, articulate ideas, and develop the essential skills I need in a competitive workforce.”

- **Kara Busick '08**,
Post-Adoption Coordinator
Christian Family Adoptions,
Portland, Ore.





“We see the college as our sister [organization] doing the same thing: reaching into the community, this region, and beyond ... I think the church becomes stronger because of the influence of Warner Pacific .”

- **Rev. Don Doe '76**
Senior Pastor,
Vancouver (Wash.) First Church of God

Partnering in ministry to reach the community

Rev. Don Doe '76



Rev. Don Doe '76, senior pastor of Vancouver (Wash.) First Church of God (VFCOG), believes it is vital for Churches of God to support the mission of Christian higher education at Warner Pacific College. VFCOG is one of Warner Pacific's largest church donors.

"We see Warner Pacific as our sister [organization] doing the same thing: reaching into the community, this region, and beyond," said Doe. "The ethos of our church is this is a way to make an impact on the world . . . I think the church becomes stronger because of the influence of Warner Pacific. We have alumni that come back to become laypeople in our church, become teachers, board members, and people of influence. Their perspective of the Kingdom is broadened by being educated through Warner Pacific."

Doe has strong connections to VFCOG. His brother-in-law, Rev. Gerald Marvel, led the congregation from 1970 to 1999, during which the church constructed its current facility and the adjacent King's Way Christian School and Learning Center, which provides classroom space for Warner Pacific's Adult Degree Program in the evenings. Doe became senior pastor in 2008, after serving churches in Oklahoma and Arizona.

Doe says he has Warner Pacific to thank for his career. He grew up in the Church of God as a youth in Los Angeles, Calif. and was the first person in his family to go to college. However, when he arrived at Warner Pacific in 1972, he had no direction for his life. He says it was the influence of professors, the

college community, and leadership opportunities on campus that lit a spark in him for ministry.

"It was at Warner Pacific where Christ got a hold of me," said Doe. "My faith became more than just my parents' faith or the faith of the church, but it became my faith and I really felt the love of Christ. All of a sudden to be a part of God's Kingdom, to be part of His church, to do ministry seemed to me to be the most exciting thing that I could do with my life . . . Warner Pacific was God's tool to bring me to where I needed to be and where I am today."

Doe saw Warner Pacific have a similar impact on his daughter, **Randee Doe '03**, who also held leadership positions when she was a student at the college. She recently finished seminary after having served as a Church of God missionary in Japan.

"She got a heart for missions at Warner Pacific," said Doe.

Doe encourages churches not only to include gifts to Warner Pacific in their annual budgets, but to also lift Warner Pacific up in prayer and encourage potential students in their church community to see the opportunities for spiritual growth and personal development that the college provides, both in traditional and Adult Degree programs.

"A lot of students would benefit from Warner Pacific because the community they get in a smaller church is exemplified on campus," said Doe. "It's a natural bridge to go there."



Taking advantage of world-class research

Bryce Rasmussen '11

Among the many health risks that pregnant mothers face, acute changes in blood pressure are among the more serious complications. Abnormal blood pressure can exacerbate the level of bleeding that is a normal part of childbirth, putting the mother's life in danger.

And Warner Pacific biology major **Bryce Rasmussen '11** is helping researchers at Oregon Health and Science University figure out why the reflex that is supposed to regulate blood pressure doesn't always work as well as it should.

"My long term goal is to eventually teach at a university, but I also still want that research aspect," said Rasmussen. "[My Murdock scholarship] is giving me that opportunity."

For the next year, Rasmussen will be working in the lab of professor Virginia Brooks, Ph.D., through the Murdock Collaborative Undergraduate Research Program. Rasmussen is assisting the Brooks lab with a ground-breaking study examining how pregnancy and obesity alter the regulation of blood pressure. The study is searching for the specific neuropathways that influence the so-called "baroreceptor reflex," which causes blood vessels to constrict or dilate according to need.

The Brooks lab knows that insulin in the brain triggers a neuron that communicates, via a neurotransmitter, with other neurons that eventually influence the baroreceptor reflex. However, with decreased brain insulin levels associated with pregnancy, the transmission appears to break down.

"Insulin starts the action and we know where the second neuron is, but we don't know how the two neurons talk to each other," said Brooks. "We're trying to find the neurotransmitter."

In the lab, Rasmussen incubates micro-thin slices of brains taken from test rats with a series of antibodies that cause neurotransmitters to glow under fluorescent light. Once the specific neurotransmitter is identified, Brooks and her team can better examine what might be going wrong when insulin levels drop.

The implications of the study are huge, as they point to the potential development of medications that will help control blood pressure in insulin-resistant patients.

"The work that Bryce is doing is really important," said Brooks. "He's sharp and a real quick study."

Rasmussen transferred to Warner Pacific from Tacoma Community College last year because he liked the size and quality of the biology program. He appreciates how accessible and supportive his professors have been, especially in helping him pursue the opportunity at OHSU. He hopes the research experience will help him as he looks ahead to graduate school.

"You don't really hear about a lot of Christians in the scientific field," said Rasmussen. "That's why I want to teach at a university."



“My long term goal is to eventually teach at a university, but I also still want that research aspect.”

- **Bryce Rasmussen '11**
Warner Pacific Biology major
Murdock Scholar at Oregon Health and Science University





Realizing an educational dream as a family

I'nita Hafley '12, Danita Worthy '11, Gwendolyn Worthy '09, and Portia (Payton) Jones '09



I'nita



Danita



Gwendolyn



Portia

Warner Pacific student **I'Nita Hafley '11** taught the women in her family to be strong and independent. Her oldest daughter, **Gwendolyn Worthy '09**, served in the U.S. Air Force and later was recognized for her contribution as the First African American woman to reach journeyman status in four skill areas as a civilian. I'Nita's second daughter, **Danita Worthy '11**, is a former dancer and model who currently works as a supervisor at a cable company. And her granddaughter, **Portia (Payton) Jones '09** (Danita's daughter) served in Iraq and post-Katrina New Orleans, also with the U.S. Air Force.

However, for all of their endeavors, these four women once shared the same unrealized goal: finishing their bachelor degrees. They valued education, and had taken college courses before, but life circumstances had kept them from completion — that is until I'nita enrolled in Warner Pacific's traditional program in 2008, 16 years after retiring as a supervisor with the U.S. Postal Service in Cleveland, Ohio.

"I was active with the [postal workers] union and I always did volunteer work with youth," said I'nita, a business administration major student at the college's Mt. Tabor campus. "I would love to be a motivational speaker and motivate young people."

Encouraged by her grandmother, Portia checked out Warner Pacific and liked that it was a Christian school with an Adult Degree Program for working adults. She started classes at the Centre 205 campus, while working as an executive assistant at Nike (She now works for the Veterans Affairs Medical Center in Vancouver).

"I want to help people," said Portia, who majored in human development. "I knew I needed a degree for that."

Intrigued by the pursuit of education and the courses her mother and niece were taking at WPC, Gwendolyn enrolled in ADP as well, taking business administration classes in West Portland. She had studied engineering technology in Ohio before her military service and currently works in facility operations at the Bonneville Power Administration, in Portland. She says the best part about ADP was the diversity of backgrounds her classmates represented.

"There were people with a lot of rich knowledge," she said. "ADP helped me learn to take advantage of their experiences."

The final convert was Danita, who was a little hesitant to return to college after a frustrating experience at a community college. Nonetheless, she felt a degree from Warner Pacific would validate the nine years of management experience she had gained at Charter Communications, in Vancouver. Her classes met at ADP's Vancouver branch at King's Way Christian School, and, like her sister, Danita appreciates studying alongside working professionals. She also finds assignments very practical.

"It has made it easier to adjust because most [projects] are life-related," she said.

These exceptional four women are near their collective goal. Portia and Gwendolyn graduated last December and I'nita and Danita are on target to finish in 2011. Portia is now studying counseling at a local seminary and Gwendolyn is in Warner Pacific's Master of Management and Organizational Leadership Program.

They are grateful for the opportunity, and are testament to hard work, perseverance, faith — and one determined matriarch.

Individual Donors

Up to \$100

Aaby Channing
 Mike & Vicki Abbate
 Merle & Carol Abraham
 Elizabeth Ackley
 Greg & Tina Adams
 Annette Adams
 Robert & Juanita Adams
 James & Barbara Adams
 Alexander & Bernadette Albertine
 Alexander & Margaret Albertine
 Robert & Lynetta Allenbrand
 Janice Amburgey
 Harriet Anderson
 Louis & Ilene Anderson
 Nadine Anderson
 Katie Annas
 Dan & Donna Archibald
 Sally Armell
 Ralph Arzate
 Robert Arzate
 Tommy & Erin Arzate
 Susanne Ast
 Kathleen & Larry Ayre
 Rolando & Bernarda Bacani
 Vivian Backman
 David Bailey
 Samuel & Regina Ballard
 Karen Banks
 Deborah Banks
 Kurt & Marlys Barbee
 Roberta Barrie
 Diane Bartel
 Peggy Bauer
 Tisha Bear
 Helen & James Behnke
 Ivan & Nancy Benson
 Carl & Deanna Benson
 Charles & Cheri Benson
 Raymond & Susan Berg
 Rebecca Berg
 T. Allen & Daphne Bethel
 Lyle Bickley
 Jess & Candice Bielman
 Shirley Billedeaux
 Mitchell Billings
 Diane Binder
 Bonny & Stephen Bissell
 Robert & Lola Bixler
 Lillian Bjugstad
 Antonio Blas

Kenneth Blaylock
 Robert & Grace Bletscher
 Cathy Blunt
 Kenneth Boal
 Norlin Boberg
 Mary Bolton
 Jarrod & Marissa Boman
 Gregg & Kelly Borror
 Roberta Bowman
 Frankie Brady
 Wanda Brannon
 Michael & Lynn Brant
 Donna Braun
 Rebekah Bray
 Lee & Kimberly Briggs
 Ivan & Denise Brink
 Jane Brinlee
 Jebodiah & Priscilla Bristow-Hanna
 Walter & Jane Broadwell
 Daniel & Vickie Brough
 John & Mary Brown
 Brenda & Jeffrey Brown
 Lyn Brown-Farris
 Gary & Kathleen Bruner
 Fern & Stanley Bucknum
 John & Mary Bucy
 Edmond & Martha Burton
 Geneva Burwell
 Bettie Butler
 James & Sandi Butler
 Francis Butler
 Bernadine & Howard Butz
 Durward & Mariet Cage
 James Calhoun
 Joe & Lori Calhoun
 Karen & Robert Callison
 Janice Calvert
 John & Betty Campbell
 Ronald & Adelia Carlson
 William & Shirley Caylor
 David & Janelle Centers
 Enrique & Lidia Cepeda
 Roger & Pat Chamberlain
 Donovan & Emily Chandler
 Barry & Barbara Chapelle
 Christopher Cheek
 Tina Chick
 Steve & Wanda Chiles
 Elizabeth & Max Christian
 Thomas & Norma Clapper
 Lance Clark
 Linda Clear
 Gerald & Bonnie Clegg
 Robert & Patricia Cochran
 Thomas Cody
 David Collett
 James & Susan Colletta

Larry & Nancy Collins
 Patricia Colvin
 Marjorie Combs
 John & Wanda Conley
 Heather Cormack
 William & Lois Costine
 Pauline Crespo
 Steven Cron
 Ralph & Theresa Cross
 Allen & Maxine Cumings
 Robert & Gloria Cunningham
 Michael & Connie Dana
 Susan & Dan Darrow
 Maureen Daudistel
 Thomas & Julie Davis
 Ronald & Jeannette Davison
 Jeannette Davisson
 Jerry & Sandra Davison
 Kathleen Day
 Michael Dean
 Jerry & Betty Deese
 Thys & Rina DeHoop
 Barbara Dent
 Ryan & Danae Denton
 Herbert & Shirley Dietz
 Jerry Dietz
 Frank Door
 Penelope & Roger Dorsey
 Richard & Roberta Doster
 Julie Dougherty
 Richard Doughy
 Christine Draper
 Donald Draper
 Patricia & William Dunn
 Elizabeth DuPriest
 Larry & Rhonda Durant
 Debbie Duris
 James Dyal
 Kristen Eddy
 Fred & Bonnie Edwards
 Fred Edwards
 William & Joan Edwardson
 Calvin Eib
 Richard & Carolyn Einerson
 Donald & Margaret Ellenberger
 Gayle Ely
 Megan Enos
 Cary & Lynnae Erickson
 Nathan Erion
 Karene Esau
 Donald Esau
 Kraig Etzel
 Michael & Christine Evans
 Kenneth & Grace Evans
 Justin & Deann Faiferlick
 Michael & Chris Farrar
 Samuel Fenstermacher

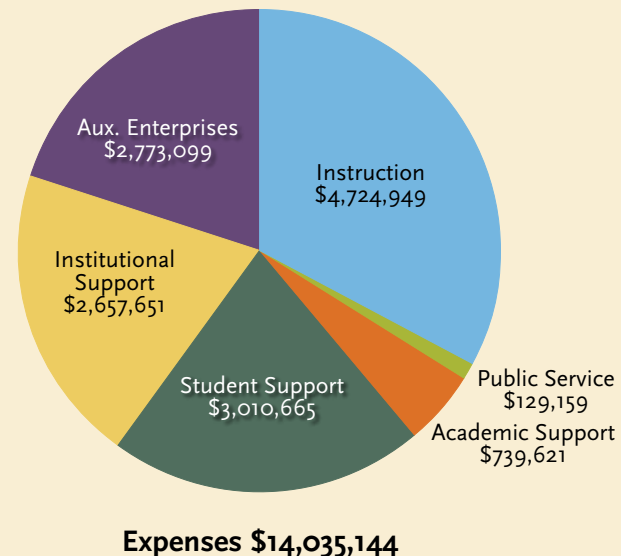
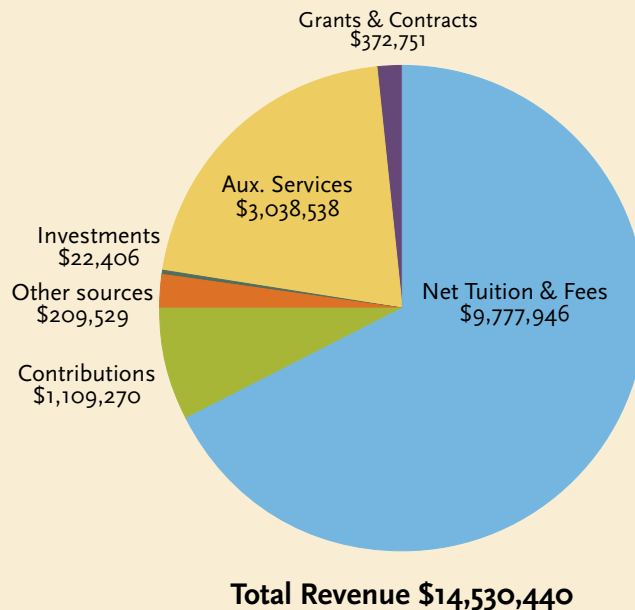
Camilo & Gicela Fernandez-
 Hermo
 Keith & Karen Fifer
 Marlene Fischer
 Rodney & Annette Fischer
 Wilmer & Jean Fischer
 Darold & Margaret Folsom
 Mary Francisco
 Victoria & Henry Franco
 Staci Franklin
 George & Louise Frankovich
 Steve Fray
 Barry & Kristi Freeman
 John Fries
 Shirley Fritzler
 Walter & Martha Frost
 Dorothy Gallagher
 Annie Gerling
 Roger & Aiga Gilbert
 Florence Gimse
 Iris Goff
 Ron & Carolyn Goforth
 Joseph & Anna Gomes
 Martha Graham
 Marci Grant
 Doris Graves
 Charles & Zona Gray
 John & Kristi Gray
 Sandra Green
 Shandra Greig
 Valerie Grijalva
 Riva Gross
 Susan & Michael Gurney
 Norma Haag
 Mark & Debbie Haddock
 Mike & Jean Haerling
 Leah Hall
 Marlo & Mary Hall
 Hazel Ham
 James & Jacqueline Hamburg
 Garth & Kathryn Hamilton
 Helen Hamilton
 Gail Hanson
 Darlene Harris
 Joseph & Alice Harris
 David & Sandra Harrison
 Kurt & Nicole Harrison
 David Harrison
 Clifford & Marilyn Harrison
 James & Marjorie Hart
 Gary Hartley
 Douglas Hartman
 Joyce & Lawrence Hartman
 Robert & Cheryl Haskell
 Matthew Hawthorne
 Frederick Helbling
 Tom & Phyllis Herringshaw

Leon Hicks
 Anita & Tom Hicks
 Maxine Higgins
 Stephen Hilby
 Lucille Hinz
 Rocky & Patricia Hirst
 Jim & Becky Hohnstein
 Charles & Jeanni Hohnstein
 Lorraine Holmes
 Moody & Norma Honeycutt
 Lewis & Donnie Honeycutt
 James & Sharon Hoppel
 Sharon Hoseley
 Jeanne Hossler
 Jennifer House
 Chet Hovde
 Lynden & Wanda Howard
 Brad Howe
 Jean Hoyle
 Richard & Eva Hubacek
 Barbara Hubbard
 Tracy Hughes
 Donald & Marjorie Hussong
 Lewis & Barbara Hyslip
 John & Sharon Irion
 Ron & Julie Jackson
 Lynn & Joanne Jackson
 Rita Jendro
 David Jeska
 Sheila Johnson
 Donna Johnson
 Annette Johnson
 Juanita Johnson
 Leeann Jones
 Ronald Jones
 William Jones
 Timothy & Marcia Jones
 Claudia & Dale Kardos
 Edgar & Carolyn Kartic
 Beverly Kelley
 Scott & Charlotte Kelly
 Carol & James Kemp
 Gregg & DuAnn Kenney
 Kevin & Peggy Kent
 Douglas & Norma Kernutt
 Jon Kimmett
 Charles King
 Pamela King
 LeAnn & Jim Kinnee
 Heidi Kirk
 Charles & Maureen Kirkpatrick
 Mark & Kristen Kirsch
 Ken Knight
 Joseph & Dorothy Kniser
 Diane Koeth
 Tokiko Kosugi
 Curtis Krieger

Ronald & Dana Kruse
 Gordon & Marian Kunke
 Virginia Kuns
 Douglas & Jeri Kuns
 Kenneth & Darlene Kurtz
 John & Sally Kuykendall
 Ronald & Betty Kyker
 Leeta Lagerstrom
 Donald & Geneva Lamanna
 Irma Lambert
 Richard & Marian Lander
 Mary Lee
 Elaine Lee
 Heidi Leinewebber
 Janice Leinwebber
 Gilbert & Rose Lewis
 Lorene Linamen
 Jennine Lindberg
 Elie Linden
 Elizabeth List
 William & Eileen Lobdell
 Tamara & Victor Lopez
 Kimberly Love
 Robert & Corliss Luckenbaugh
 D. G. & Diane Lukens
 Richard & Joanne MacLean
 Gary & Theresa Maguire
 Robert & Johnette Majury
 Donald & Patti Maltase
 Muriel Marble
 Jesse Mark
 William & Joy Marsh
 KayLynn Mather
 Joe & Connie Matis
 Frederick & Christine Matthies
 John & Teresa McArtor
 Richard McCabe
 Bruce & Kathy McCain
 Kenneth McCorkle
 Jack McCoy
 Scott McCoy
 Kevin McCrann
 Brett & Elli McDaniel
 Juanita McDaniel
 Robert McDaniel
 Vern McDonald
 Violet McIntosh
 Donna McKechnie
 Mary Ann & Charles McMahan
 Kenn McManus
 David & Nancy McMillan
 Daniel & Susan McReynolds
 Brian Mee
 Bill & Joanne Meeker
 Stephen Merryman
 Dean & Susan Meyer
 Wallace & Gwen Miller

At a Glance: Fiscal Year 2009 - 10

Net Operational Variance



Don & Evelyn Miller
Sharon Miller
Ben Milner
Harold & Gwen Minkler
Sherri Mizell
Paul & Lola Moe
Greg & Georganne Moon
Traci Moore
Mel Moore
Richard & Nadine Moore
Tara Moore
Stanley Morgan
Joanne Morris
Hannah Morris
Michael & Sherri Mugford
Reid & Anne Murphy
Jeff & Sherry Murr
Leslie & Rhonda Nashookpuk

Robert Nealeigh
Janice Neely
Walter Neiman
Karen Nell
Daniel & Christine Nelson
Loren & Dora Nelson
Scott & Heather Neu
Robert & Marilyn New
Dorothy Nicholson
Michael & Nancy Nicholson
Kit Nidever
Mark & Lynn Nielson
Douglas & Ona Nighswonger
Paul & Gussie Ninemire
Jeff Noye
Lucy O'Hara
Adam & Lisa Olson
Marv & Debera Ortman

Virginia & Kenneth Osgood
Robert & Denise Otis
Walter Neiman
Vivian Otness
Phyllis Packard
Vern & Sylvia Page
Jeannie Pang
Candita & Thomas Parker
Gerald & Caroline Parker
Joann Partridge
Joseph & Patricia Pastore
Charles & Amelia Patrie
Larry & Janet Payment
Raymond & Patricia Pentecost
Linda Perkins
Martha & Walter Perry
Lorna Petersen
Sandra Peterson

Catherine Peterson
Frank & Desiree Phelps
Jim & Karen Phelps
Ray & Shelly Phelps
Dennis & Lori Phelps
Jerry & Jeannine Phillips
David Pierson
Tauna Pile
Michal Pitzl
Keith & Gloria Plank
Dennis & Barbara Plies
Pamela Plimpton
Helen Plumb
Terry & Alice Pol
Troy & Connie Porterfield
Marion & Sylvia Powell
Louis & Margaret Pratt
Dwayne & Phyllis Prink

Nancy Quigley
Arthur & Gladys Radke
Stephen Rajewich
Janet & Leroy Ramsay
Todd Randall
William & Kathryn Ratliffe
Alvis & Judy Reed
Susan Reed
George Reed
Sarah Rehnberg
Donna Rempel
Velma Renz
Janet & Marc Rice
Larry & LaDonna Richards
Jerry Richardson
Rob & Betty Rickard
Nancy Ridgeway
Alfred & Mary Rivera

Audrey Roberts
Ernest Robirds
Connie Roehl
Kathaline Rollins
Caleb & Waneen Rosado
Elizabeth Rothery
Louis Rowe
Richard & Shirley Rudman
John & Rolleen Russell
Michael & Jean Rust
Teresa Sajonia
Rick & Julie Salisbury
Doug & Anne Sampson
Cheryl Sampson-Dutro
Robert Saunders
Susan & Bill Schlink
Paul & Angela Schneider
William & Sylvia Schumacher

Howard & Sally Schwarz
David & Arleta Schwarz
Jeffrey Scott
Merle & Catarina Scrivner
Dawn Secore
M. Seifert
Edward Shakalia
Joel & Angela Shaw
Duane & Colleen Shaw
Glen & Jane Shelley
Kari Sherman
Wayne & LaDonna Shielee
Jay & Joan Shoup
Sarah ShROUT
Melissa ShROUT
David & Connie ShROUT
Rebecca ShROUT
David & Karon Shultz
Taishen & Lisa Siao
John & Betty Sigler
Michael & Janice Simpson
Charles Sinor
Jordan & Andria Skornik
Linda & Dennis Smith
Marion Smith
Cynthia Smith
Lois Smith
Thomas & Norma Smith
Benjamin & Bobbi Smith
Oliver & Anne Smith
Russell & Kathy Smith
Walter & Charlotte Smith
Harry & Marilyn Smothers
Joe & Nancy Snyder
William & Janet Soetenga
Jay Sparkman
Joyce Spear
Roy & Lynn Sprunger
Jodi Stapleton
Steven & Rhonda Stecker
Wesley & Ione Steele
John Steffens
Jim & Kim Stephens
David Story
Leeta Stoughton
Judy & Jon Straalsund
Larry & Dana Stuart
Hope Stubbs
Lolita & Richard Stuthard
Nancy Sullivan
Barbara Summey
John & Beatrice Sun
Lois & Gary Swope
Leonard & Manota Sylvestre
Lee & Lezlie Tafoya
Pauline Tallman
Christina Taylor

James Teague
Patrick & Rebecca Thomas
Sheryl Thompson
Robert Thompson
Steven & Lori Thompson
Clifford Tierney
Craig Timmons
Helen Timmons
Alan & Gwenn Tinnerstet
Tyler & Michelle Toney
Matthew & Kay Tracy
James & Paula Trosen
Barbara Tunnell
Mike & Beverly Tupper
James & Elouise Upchurch
Richard & Anna-Marie Updegraff
Margaret Uribe
Margery & Thomas Vale
Danielle Van Dissel
Mary & Robert Vandiver
Kelen Velez
Janice & David Vigna
Duncan & Tracey Vuksich
Jo Waldo
Roberta Walker
Carol Walters
Mark & Ruth Walton
Aaron & Katie Walton
Serena Watkins
Val & Liza Watkins
Avonelle Wease
John & Megan Weaver
Sharon & Paul Webb
Rick & Deborah Weems
James & Mary Wells
Micheline Westlake
Heidi Whisman
William & Jane Whitehead
Rotha Whiting
Robert & Marijean Whitmore
Patty Wiebe
Herbert & Pat Willard
Henry Willener
Donald & Darlana Willey
Roy Williams
Marc & Jo Williamson
Janet Wilson
Kenneth & Paula Wilson
Rhonda Wilson
Chester & Cheryl Wilson
Mary Winkle
Daniel & Marisin Wissman
Thomas & Kristine Wood
David Wood
Brian & Diana Wright
Dixie Wyllie
Vicki & David Yang

Jamie Youngwirth
Wilfred Yuen
\$101 - \$500
Edward & Ruth Adams
Barbara & Marvin Allenbrand
Trent Anderson
Betty & David Astin
Wayne Aus
Dean Bammerlin
Dirk & Nancy Barram
Maryln Bennett
Demarcus & Joy Best
Connie Bless
Takis Bogris
Margaret Brallier
Bertha Brown
Janet Brown
Philip & Barbara Bruzzese
Bernie & Cynthia Buckle
Regainia & Donald Buss
John & Sarah Castles
Jesse Chambless
Ben & Marjorie Chandler
Lucile Chapelle
Robert & Barbara Christensen
Gene & Michele Christian
Wayne & Jean Cook
Bryan Cook
C. Richard & Ardys Craghead
Lorraine Creek
Victoria Cumings
Deborah Debruin-Willhite
Judith Dix
Jeanene Dodge
Donald & Lori Doe
David & Peggy Dougherty
John Douglas
Nathan & Maryann Dunbar
Ronald Duncan
Merged Duplicate
Steven & Irene Edgar
David Edwards
Cecil & Annette Evans
Alice Falkenberg
Dallas & Linda Fast
Edward & Celia Fitzgerald
Louis & Myra Foltz
Myron & Priscilla Forsyth
LaMyrtha Frazier
Otto & Laurie Gaither
June Gomes
Robert & Kathy Graham
Donald Gross
Robert Gulick
James & Monica Harbolt

Cheryl & Robert Haskell
Scott & Jennifer Hawkins
Robyn & Donald Heerlein
Mark Heindselman
Waldean Hemenway
Owen & Joyce Hinkle
Samuel & Adele Hooker
Glen & LaRene Hossler
Glenn Jacobs
Judy Jendrzejewski
Savas & Olive Joannides
Donald & Betty Jo Johnson
Hollis Johnson
Ione Keen
Shirley Keith
Arthur & Judy Kelly
Ernest LaFont
Harold & Donna LaFont
Carol & Robert Lawrence
David & Colleen Lee
Doug Lemen
Herbert Lewis
Maurice Macy
Lyndsy & Jonathan Manz
William Marshall
Michael Marsh
Roger Martin
Deborah Meeker
Kimberly Merydith
Terry & Renee Meyer
Larry Miller
Joe & Mary Minkler
Robert & Lois Moore
Kelley Moore
Doris Morgan
Jusuf & Maria Murtidjaja
Lillian Neufeld
McCoy & Marge Nevin
Elvan & Eleanor Newcomb
Charles & Phyllis Nielsen
Ron & Ruth Palmer
Grant Pautz
Connie Phillips
Manfred & Linda Plikat
Cynthia & Steven Pollard
Edward Powell
David Pullin
Bill & Jean Pyne
Richard Quesenberry
Leslie Ratzlaff
Thomas Reedal
Alfred Reinholz
Kenneth & Marjory Renfrow
Gary Rider
Leota Robertson
Lester & Mabel Hazen
Mary Hazlett
Doyle & Nettie Huffmaster
Eileen Hulme

Clem & Helen Ryan
Robert & Marcelynn Salisbury
George Schmidt
Donna & Terry Scott
Ed & Nancy Scrivner
Ryan Seidlitz
Marion Shaw
Richard & Sharon Shorb
Terry & Betty Jo ShROUT
Sharon Skaggs
Evelyn Skaggs
Clara Smith
Aaron & Charlene Smith
Roy & Maria Spomer
Lex Strom
Michael Sullivan
Joel & Janine Tallman
Gary & Karen Taton
Mary Teague
Jenne Van Lydegraff
Jeffrey & Shonda Waldbauer
Bill White
Bill Williamson
Kevin Wills
Richard & Sharon Wilson
William & Karen Wilson
Pamela & Darryl Wilson
Trevor Woods
Dolores Wright
Charles & Thelma Wyatt
John & Winnie Yordy
James Zeller
Doug Zibell
\$501 - \$1000
Tim & Jan Arensmeier
Steven & LaVisa Arnold
Elizabeth Baker
Jay & Jan Barber
Donald Bartlett
Curtis & Shari Bechler
Janice & Donald Berghouse
Verna Bruss
Maurice & Dondeena Caldwell
Jerry & Karma Crafton
Roger Culbertson
Cole & Linda Dawson
Herm Deiss
Roy Dockter
Troy & Kathryn Eastwood
Arthur & Norma Eikamp
Bernie & Susan Fagan
Lester & Mabel Hazen
Mary Hazlett
Doyle & Nettie Huffmaster
Eileen Hulme

Randy & Sandra Irwin
Bruce & Judy Kelly
Joanne Kendall
Wanda Kernutt
Lori & Wayne Kuechler
Phillip & Karen Lander
Janet Lawrence
Ralph & Helen Little
Peter Lubisch
Robert & Carolyn Magathan
Rod & Billie Monroe
David & Marilyn Nasman
Jack Nelson
Steven & Karen Olson
Bonni & Bill Parks
Toni Pauls
Duane & Jan Petersen
Lloyd & Judith Prink
Justin & Denise Rosenblad
Mary & Al Ross
Joan Schrader
Steve Stenberg
Dan Tracy
Charles & Christine Watkins
Lauren Waymire
Jean Williams
Robert & Lila Winger
\$1001 - \$2,500
Stephen & Borgny Anderson
Douglas & Tamara Bennett
Derek & Heidi Bradford
Kevin & Sara Bryant
Gary & Penny Combs
Dan & Lauren Dixon
Greg & Margaret Englund
Florence Eudy
Helen Flynt
Kurt & Jennifer Gilge
Vic & Becky Gilliam
Charles & Freda Hamilton
Douglas & Susan Hamilton
Gale & Marelyn Hency
Sandra & Elmer Jantzen
John & Gwen Johnson
William & Frances Kirk
Jonathan & Varetta Mayes
Dana McGuire
Thomas & Sandra Miller
Steven & Shanda Moore
Daniel & Roberta Petersen
Glenn & Diane Scott
Clifford & Aileen Shrock
Julia ShROUT
Paula & Vernon Smith
Robert & Diana Stewart

Ted Takamura & Raynette Yoshida
Robert Thomas
Bart & Becky Valentine
Bruce & Linda Valentine

\$2,501 - \$5,000

Andrea Cook
Jeffrey & Suzette Davisson
Claudia Hemenway & Robert Bauer
Stephen & Patricia Hoover
Timothy & Lorrie Reiterman
Greg & Suzanne Swanson

\$5,001 - \$10,000

Arnold Christensen Estate
Gloria Law Estate
Alonzo & Vada Monroe
Dale & Monica Monroe
Stephen & Judith Robertson
Jim & Terri Teague

\$10,001 - \$20,000

Ed & Deidre Bergler
Maribeth Collins
Mark & Barbara Denton

\$30,001 - \$50,000

Drs. John & Betty Thompson

\$50,001 - \$100,000

Bill & Lola Gates Estate

Organizations

2nd Street Community Church
Akron Springfield Assembly of God
Alder Grove Church of God
Assembly of God: Pahala
Assoc of Ch of God OR and SW WA
Big Sandy Community Church
Black Lake Timber Inc
Blue Mountain Comm Church of God
Boeing Company
Brotherhood Church of God
Calvary Chapel North Bend
Central Bible Church
Cherry Park Plaza Bible Study
Aloha Church of God
Church of God Edmonds
Church of God Ministries
Church of God Montesano
Church of God Powers
Church of God Springfield
Church of God Tigar
Coffee Cove Cafe
College Park Comm Church
Comm Church of God: Centralia
Comm Church of God: Gales Creek
Comm Church of God: Rainier
Community First Church of God
Conservative Christian Fellowship Church
Cornerstone
Cornerstone Community Church of God
Cornwall Church of God
Crosspointe Church of Natomas
Crossroads Comm Church
Curves of Milwaukie
Domaine Enterprises
East Side Church of God
Enterprise Rent-A-Car
Erwin T. Koch Charitable Trust
Bremco & Co Trust Department
Estacada Community Fellowship
Fairview Church of God
Faith Evangelical Church
Fargo Refrigeration, Inc
Fellowship Bible Church

First AME Church
First Baptist Church: Astoria
First Christian Church: Phoenix
First Church of God - Pendleton
First Church of God: Albany
First Church of God: Atwater
First Church of God: Clarkston
First Church of God: Des Moines
First Church of God: Guam
First Church of God: Juneau
First Church of God: K Falls
First Church of God: Longview
First Church of God: Pac Grove
First Church of God: Red Bluff
First Church of God: Redmond
First Church of God: Staunton
First Church of God: Tulare
First Church of God: Vancouver
Fourth St. Church of God
Friendly St. Church of God
Global Facilities Service Corp.
Greater Portland Baptist Church
Gresham Ford
H. N. and Frances C. Berger Foundation
Hamburg Agency
Highland Park Community Church
Highland United Church of Christ
Holladay Park Church of God
Hoodview Church of God
Hot Connection Electric, Inc
Hucrest Community Church of God
Institute for Professional Development
Integra Telecom
Intel Foundation
Isaiah 58 Broadcast
Iseli Foundation
K. Arakelian Foundation
Kapaa Assembly of God Church
KPMG LLP
Lake Grove Presbyterian Church
Law Office of Sonya Fischer PC
Lents Gilbert Church of God
Lulu Boutique
Lynchwood Church of God
Majestic Eagle Agency Inc.
Maranatha Church of God



Marcus Therapeutic Counseling LLC
Microsoft Matching Gifts
Mossyrock Assembly of God
Mt Scott Church of God
Mt. Tabor Presbyterian Church
Neighborhood Chapel
New Hope Community Church
New Horizons Comm Church
Nike Employee Matching Gift Program
North Modesto Church of God
North Pacific Physical Therapy
Northwestern Mutual Foundation
Oak Park Comm Church of God
Oasis of Hope
Olympia-Lacey Church of God
Oregon Independent College Foundation
Parkgate Community Church
Pleasant Prairie Church of God
Portland General Electric
Portland Marathon
Rainier Assembly of God
Redeemed Outreach Center
Regence Employee Giving Campaign
Richmond Community Church
River St. Church of God
S. D. Deacon Enterprises, Inc
Schwengels Family Trust
Shartel Church of God
Shoreline Community Church
Sierra Pines Chapel/Ch of God
South Bay Church of God
SE Community Church of the Nazarene

Southlake Foursquare Church
St. Philip Benizi - Redland
Sunnyside Foursquare Church
Sunset Park Comm Church
The Campbell Group
The Collins Foundation
The Standard Employee
Giving Campaign
Tri-Valley Church of Christ
Tuff Turf, Inc.
Universal Whistles LLC
University of Portland
Valley Hope Comm Church
Wachovia Foundation Matching Gifts
Program
Wellpoint Foundation
Wells Fargo Foundation
Western Area Regional Ministerium
Wheeler Foundation
Whispering Pines Church of God
Willamina Free Methodist Church
Wilson Gift Fund
Womack Auto Body Inc
Women of the Church of God: NE
Women of the Church of God: OR
Women of the Church of God: Salem
Women of the Church of God: W Wash
Women of the Church of God: Mt Scott
Women of the Church of God: Newberg
Women's Ministry of Church of God
Wyoming GA of the Church of God



WARNER PACIFIC COLLEGE

2219 SE 68th Avenue · Portland, OR 97215

☎ 503.517.1000 📠 503.517.1350 🌐 warnerpacific.edu

Non-Profit Org.
U.S. Postage
PAID
Portland, OR
Permit No. 527

Return Service Requested



Where Faith and Scholarship Lead to Service