

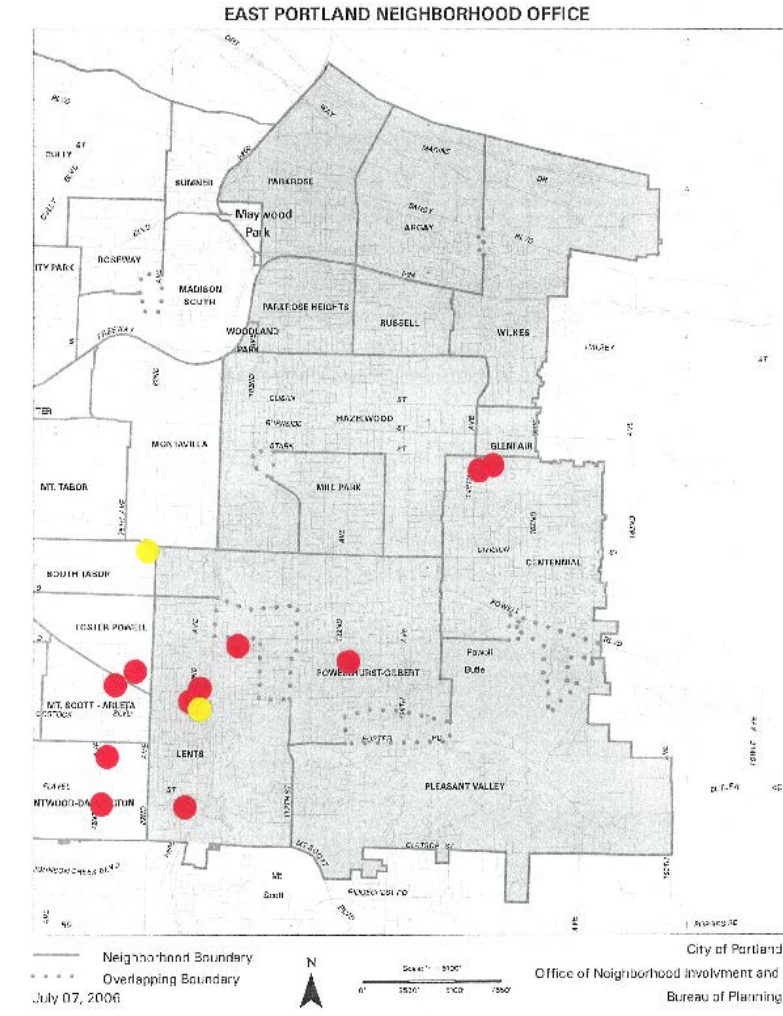
# ROSE

community development

**CONNECTS OUR COMMUNITY TO CREATE GOOD HOMES, HEALTHY  
FAMILIES AND NEIGHBORHOOD OPPORTUNITIES IN OUTER  
SOUTHEAST PORTLAND**



BRENTWOOD-DARLINGTON  
FOSTER-POWELL  
LENTS  
MT SCOTT-ARLETA  
POWELLHURST-GILBERT



# WHAT IS A CDC?

- Community-based nonprofit organization
- Serves a specific community such as a neighborhood or a population
- Develops affordable housing, economic development and social benefit projects

# WHO IS ROSE?



- Created in 1992 by outer southeast neighborhood leaders
- Majority of board members live in our neighborhood
- Asset-Based Community Development
- Social capital

# AFFORDABLE HOUSING



- 437 affordable homes
- Rental and for-sale
- Rehab and new construction
- Below market rents
- Income restricted

# RESIDENT SERVICES



- After-school programs
- Club RC soccer team
- New Year New You
- Community building

# LENTS YOUTH INITIATIVE



- Youth Empowerment Series leadership development
- Paid summer internships working on neighborhood environmental projects
- Partnership with community organizations like Green Lents, Zenger Farm and Metro



# BABY BOOSTER

- Support for families with pregnant women and babies under age two
- Social determinants of health
- Multi-sector collaboration with health systems, community organizations & churches



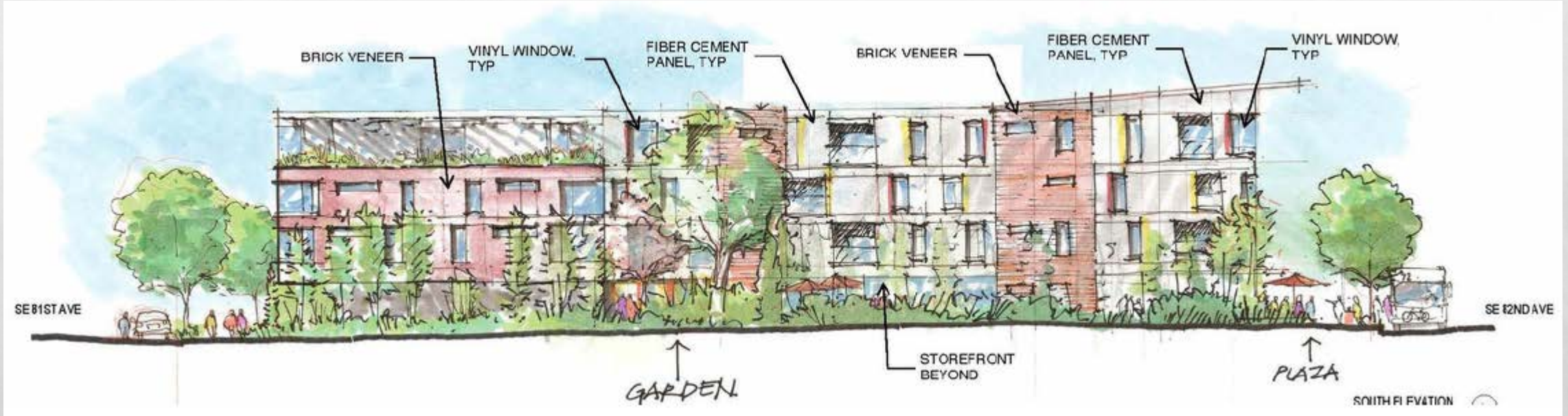
# WOODY GUTHRIE PLACE

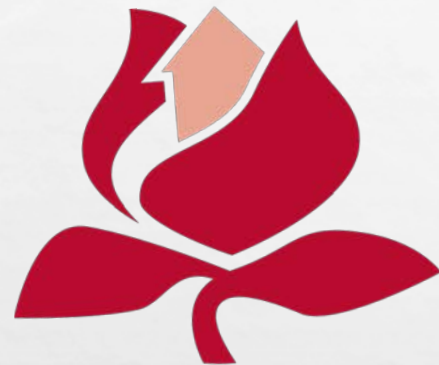


- SE 91<sup>st</sup> and Foster Road
- 64 apartments
- Baby Booster preference
- Partnership with Multnomah County Health Department

# THE JADE

- SE 82<sup>nd</sup> & Division Street
- 48 apartments
- APANO offices & community center





# ROSE

community development

NICK SAUVIE - 503-788-8052 X16 - [NICK@ROSECDC.ORG](mailto:NICK@ROSECDC.ORG)

5215 SE DUKE STREET, PORTLAND, OR 97206 -

[WWW.ROSECDC.ORG](http://WWW.ROSECDC.ORG)

